

JUNE 2025



**RADIUS**  
GOLD INC.

*Relentless Exploration - Great Discoveries*

# TIERRA ROJA **COPPER** PROJECT, PERU





# FORWARD-LOOKING STATEMENTS & QUALIFIED PERSON

## Cautionary Notes and Disclaimers

Certain statements contained in this presentation constitute forward-looking statements within the meaning of Canadian securities legislation. All statements included herein, other than statements of historical fact, are forward-looking statements which may include, without limitation, statements about the Company's plans for its investments and properties; the Company's business strategy, plans and outlook; the merit of the Company's investments and properties; timelines; the future financial performance of the Company; expenditures; approvals and other matters. Often, but not always, these forward looking statements can be identified by the use of words such as "estimate", "estimates", "estimated", "potential", "open", "future", "assumed", "projected", "used", "detailed", "has been", "gain", "upgraded", "offset", "limited", "contained", "reflecting", "containing", "remaining", "to be", "periodically", or statements that events, "could" or "should" occur or be achieved and similar expressions, including negative variations.

Forward-looking statements involve known and unknown risks, uncertainties and other factors which may cause the actual results, performance or achievements of the Company to be materially different from any results, performance or achievements expressed or implied by forward-looking statements. Such uncertainties and factors include, among others, changes in general economic conditions and financial markets; the Company or any joint venture partner not having the financial ability to meet its exploration and development goals; risks associated with the results of exploration and development activities, estimation of mineral resources and the geology, grade and continuity of mineral deposits; unanticipated costs and expenses; and such other risks detailed from time to time in the Company's quarterly and annual filings with securities regulators and available under the Company's profile on SEDAR+ at [www.sedarplus.ca](http://www.sedarplus.ca). Although the Company has attempted to identify important factors that could cause actual actions, events or results to differ materially from those described in forward-looking statements, there may be other factors that cause actions, events or results to differ from those anticipated, estimated or intended.

Forward-looking statements contained herein are based on the assumptions, beliefs, expectations and opinions of management, including but not limited to expectations that the Company's activities will be in accordance with its public statements and stated goals; that all required approvals will be obtained; that there will be no material adverse change affecting the Company, its investments or properties; and such other assumptions as set out herein. Forward-looking statements are made as of the date hereof and the Company disclaims any obligation to update any forward-looking statements, whether as a result of new information, future events or results or otherwise, except as required by law. There can be no assurance that forward-looking statements will prove to be accurate, as actual results and future events could differ materially from those anticipated in such statements. Accordingly, investors should not place undue reliance on forward-looking statements.

**Under the terms of NI43-101, Bruce Smith, M.Sc., MAIG. is Radius' Qualified Person.**

Mr. Smith holds B.Sc. and M.Sc. degrees in geology from Otago University, New Zealand, and MEng degree water and environmental resources from the IHE, Delft, Netherlands. He has been involved in mineral exploration since 1992, working mostly in precious metal deposits, but also copper, base metals, iron, lithium, uranium and mineral sands. Mr. Smith has worked throughout the world on a large variety of projects including in Africa, Europe, Asia, the Pacific, and North and South America, and speaks Spanish fluently. Mr. Smith is a member of the Australian Institute of Geoscientists (No6848) and a "Qualified Person" in accordance with National Instrument 43-101 and has reviewed and takes responsibility for the technical information contained in this presentation.

# Tierra Roja Project, Peru

## Porphyry Copper Target



Option for 100% Ownership

### Land

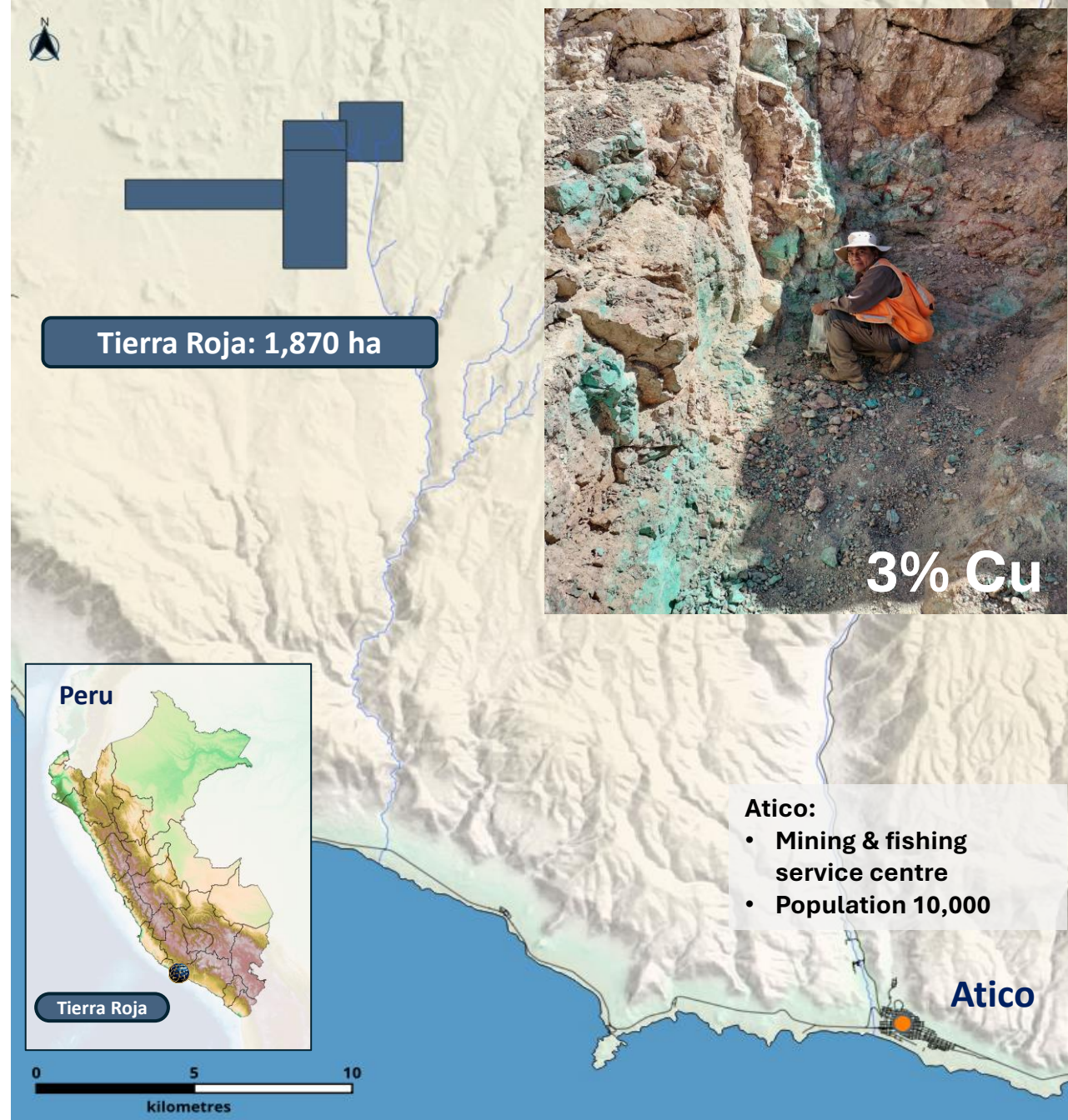
- 1,870 ha land position
- Accessible from Atico (34 km to SE); 20 km from coast
- Recent discovery with no previous systematic exploration or drilling.

### Potential

- Located in a prolific geological copper belt that includes exploration, development, and operating copper mines
- Peru is **second largest copper producer globally** (2.5Mtpa)
- Southwest Peru alone rates as top 5 copper producer globally
- Mining Friendly: Mining comprises over 60% of exports & 10% of GDP
- Oxide projects advantage of building low-cost heap-leach mines.

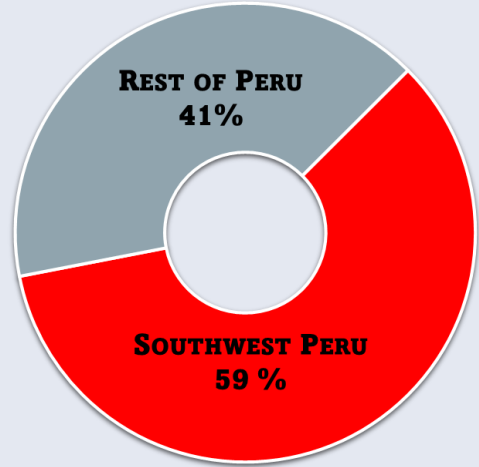
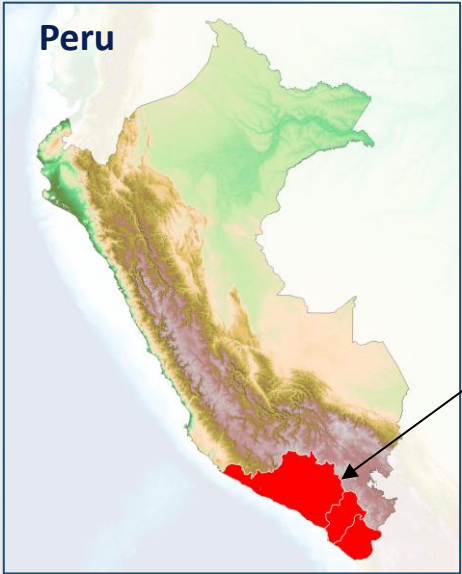
### 2024 Work program commenced

- Detailed mapping and additional sampling underway
- Conducting a 67 km ground magnetic survey
- Permitting in progress and drill targeting planned for early 2025

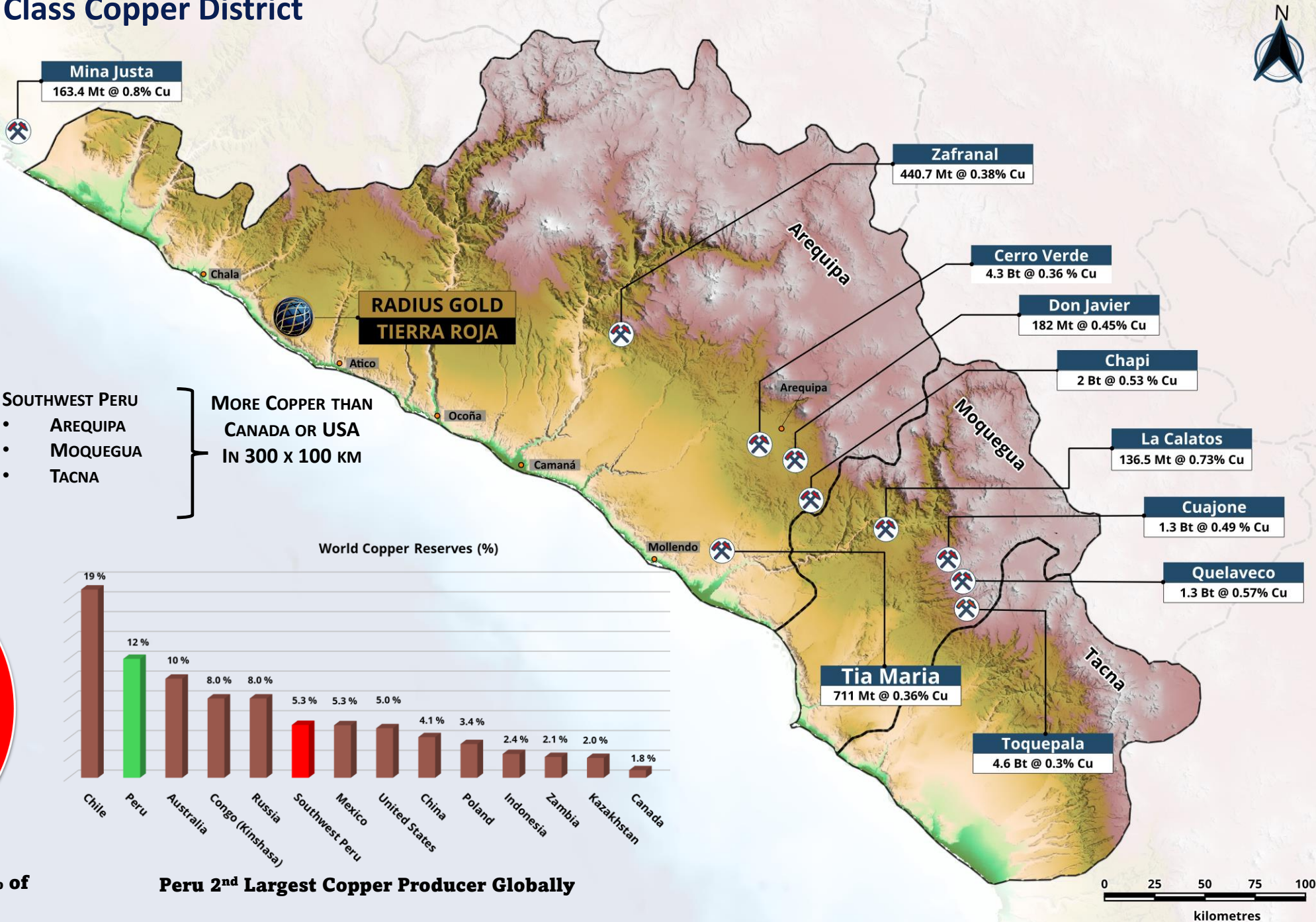




# Southwest Peru: World Class Copper District



Southwest Peru contains 59 % of Peru's Copper Reserves





Tierra Roja Easy access, federal lands, no community = Simple permitting & low-cost exploration





# Tierra Roja A Hidden Discovery

Core of the property hosts an 800 meter diameter circular anomaly with wide-spread ferruginous, sulphate soil crust developed over strong clay, sericite and silica alteration.

In arid climates sulphate crusts can indicate underlying porphyry copper mineralization. The presence suggests that sulfide oxidation and leaching have occurred, which may point to deeper copper enrichment zones.

The rusty clay sulphate crust is a few meters thick and largely hides the underlying copper oxide mineralization.

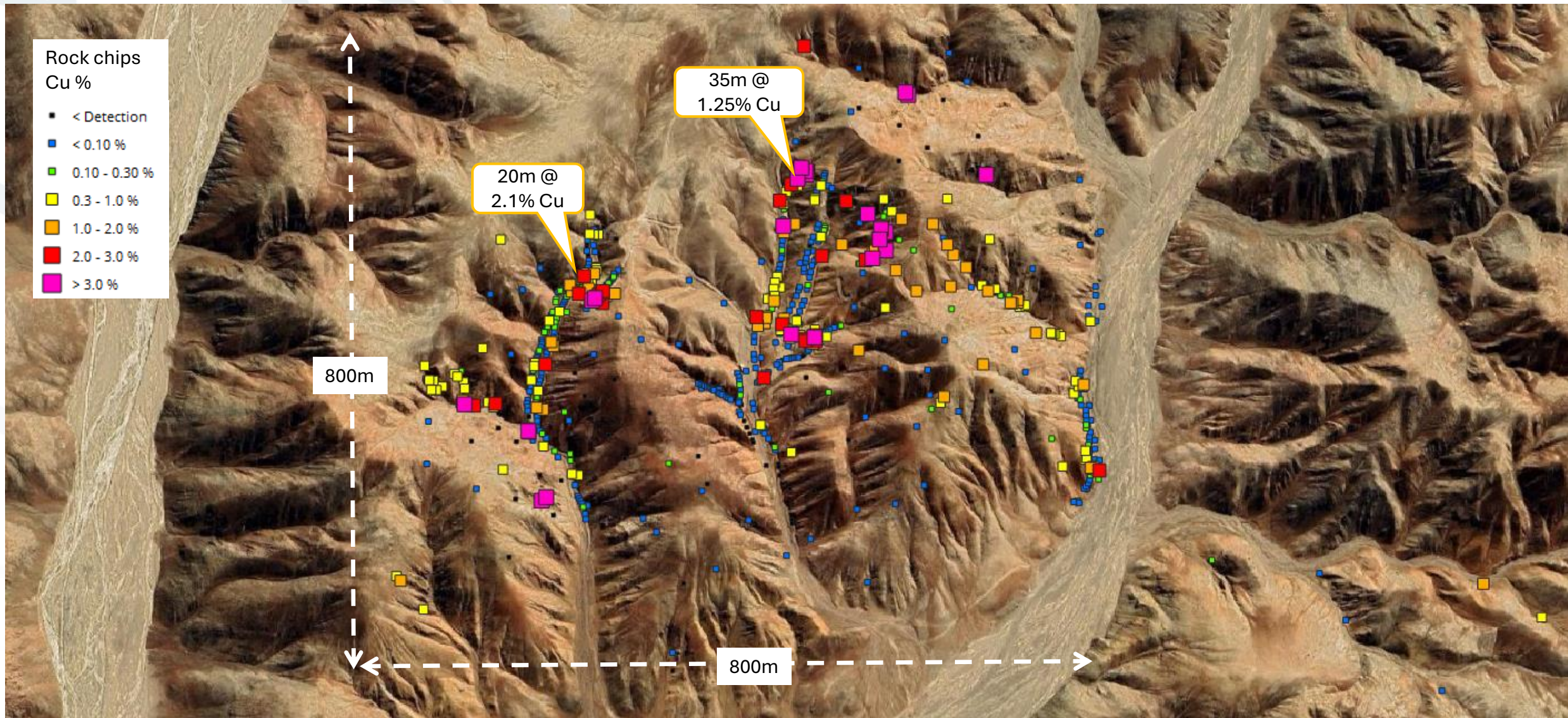
The property optionor, Mr. Montoya, a Peruvian geologist with over 50 years field experience, including senior positions with copper companies: Asarco Inc (Central America, Chile), Lowell Mineral Exploration (Chile, Peru), TVX Gold (Peru, Mexico) and Minsur (Peru), recognized the remote colour anomaly and the significance of the sulphate crust and staked the project.

Mr. Montoya cut road access with a bulldozer, breaking the ferruginous sulphate crust, and exposed widespread oxide copper mineralization covering an area of 800m x 600m.





# Tierra Roja — Geochemistry: widespread and high-grade copper oxides





# Tierra Roja – Geology (Detailed geological mapping in progress)

Extensions – open.  
Yet to be prospected

Multiple intrusives. Felsic and mafics. Breccias.

Highly oxidized, leached, with strong to intense sericite, silica, and clay alteration.

Covered with iron, clay, sulfate crust that obscures, extensive zones of copper oxide mineralization.

Post mineral  
gravels

Propylitic chlorite  
epidote alteration

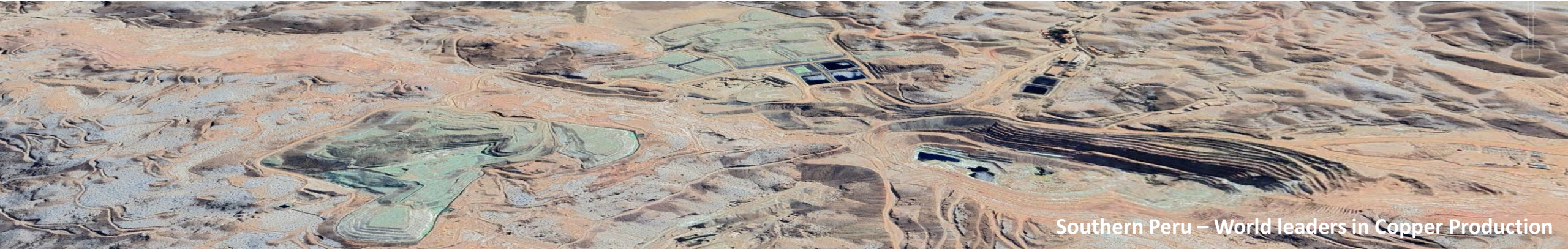
Intense breccia, strong  
silicified, high grade 6% Cu

Intrusive, leached, completely silicified,  
sericite altered and veined

The alteration observed is  
consistent with alteration  
observed at other porphyry  
copper mines within the  
southern Peru porphyry copper  
belt.

← 200m →





Southern Peru – World leaders in Copper Production

## South Peru: Economic Advantages of Accessible, Surface Oxide Copper

### 1. Access to Low-Grade Low-Strip open pit

Potentially economic to process low-grade ore, extending resource life.

### 2. Simplified Extraction and Processing

Oxide ores at/near surface are easier and cheaper to mine.

Heap leaching enables copper extraction skipping costly flotation and milling.

### 2. Lower Processing Costs with Heap Leaching

Cost-effective method that reduces capital expenses.

Minimal setup time, leveraging southern Peru's dry climate for operational efficiency.

### 3. Reduced Time to Production

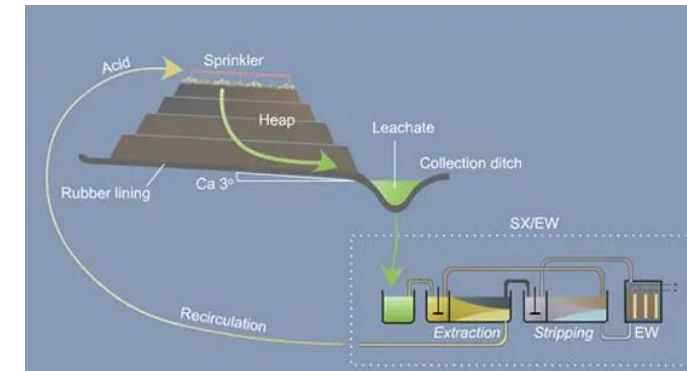
Faster transition to production boosts early cash flow.

Quick establishment of heap leach facilities, shortening the payback period.

### 4. Lower Environmental Impact

Reduced need for water and chemicals, and fewer waste byproducts.

Helps meet regulatory and community standards at lower costs.



Simple  
Low Cost  
Copper





# Amalia Project, Mexico

35 / 65%

Joint Venture



## Land & Discoveries

- 10,250 ha land position
- 3 significant discoveries to date
- 23,058 m Drilling completed in 67 holes

## Mineral Grades

High grade & wide silver-gold drill intercepts

## Location

- Located 25 km SW of the historic Guadalupe y Calvo mining district in Chihuahua

## Structural Trends

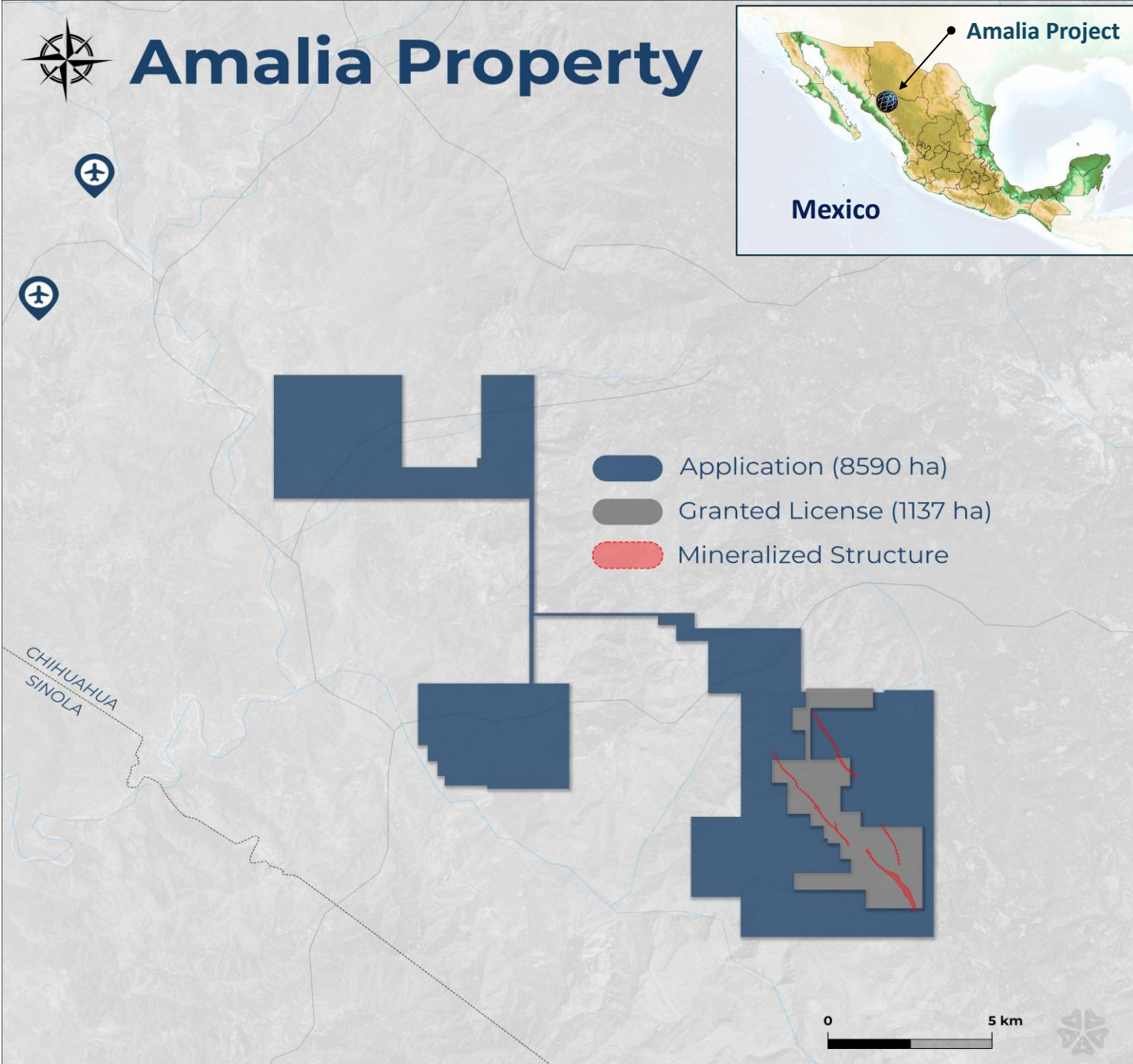
- Three major structural trend
- Combined 12 km strike length

## Next Steps

- Resource expansion & definition
- Metallurgical testing



# Amalia Property

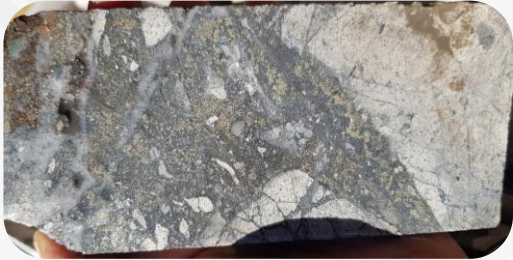




1

**Amalia Central**  
3 km vein & breccia

\*granted mining concession



2

**El Cuervo**  
+1 km vein & breccia

\*granted mining concession



3

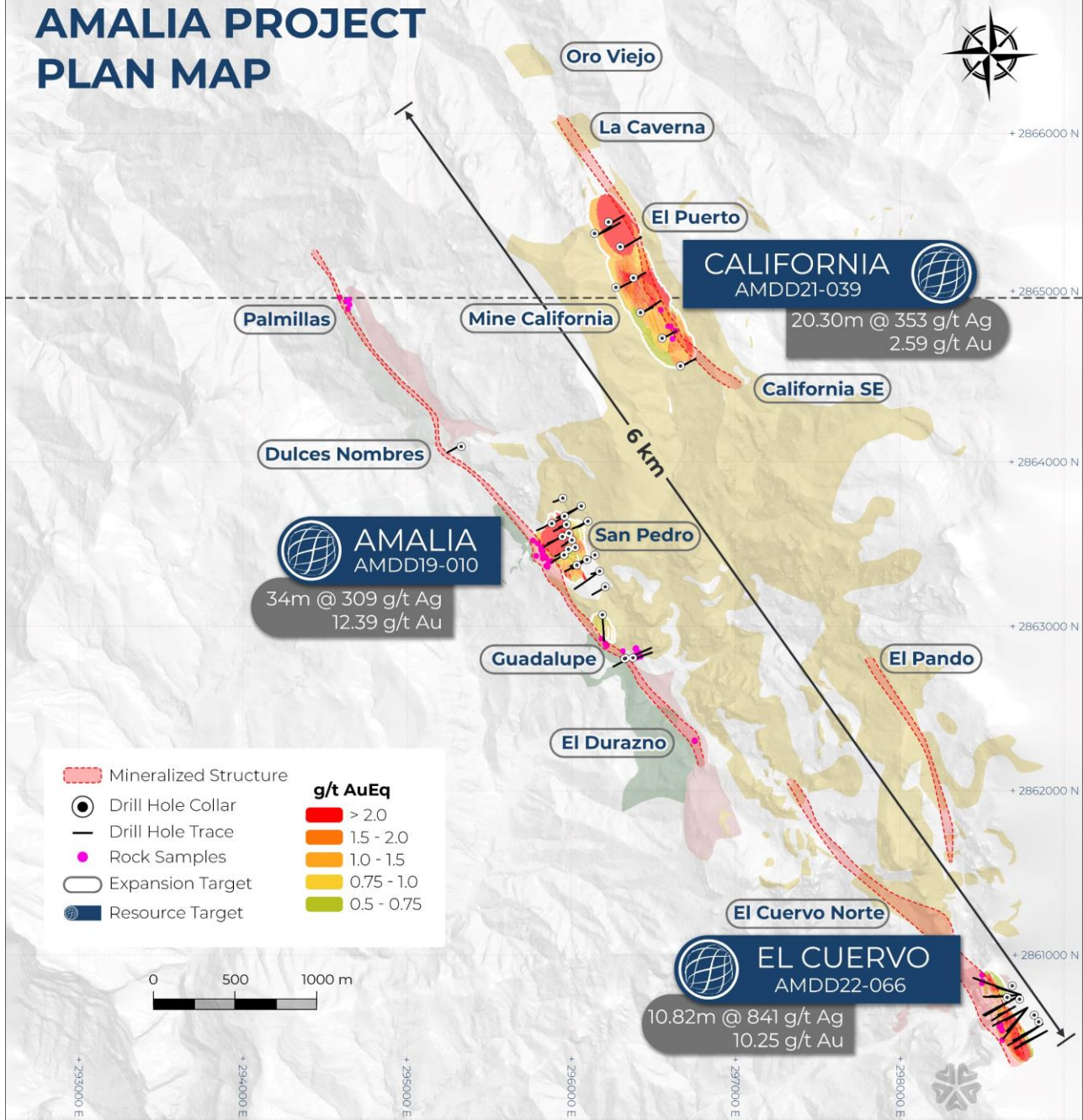
**California**  
2.8 km vein & breccia

\*partially located on license application



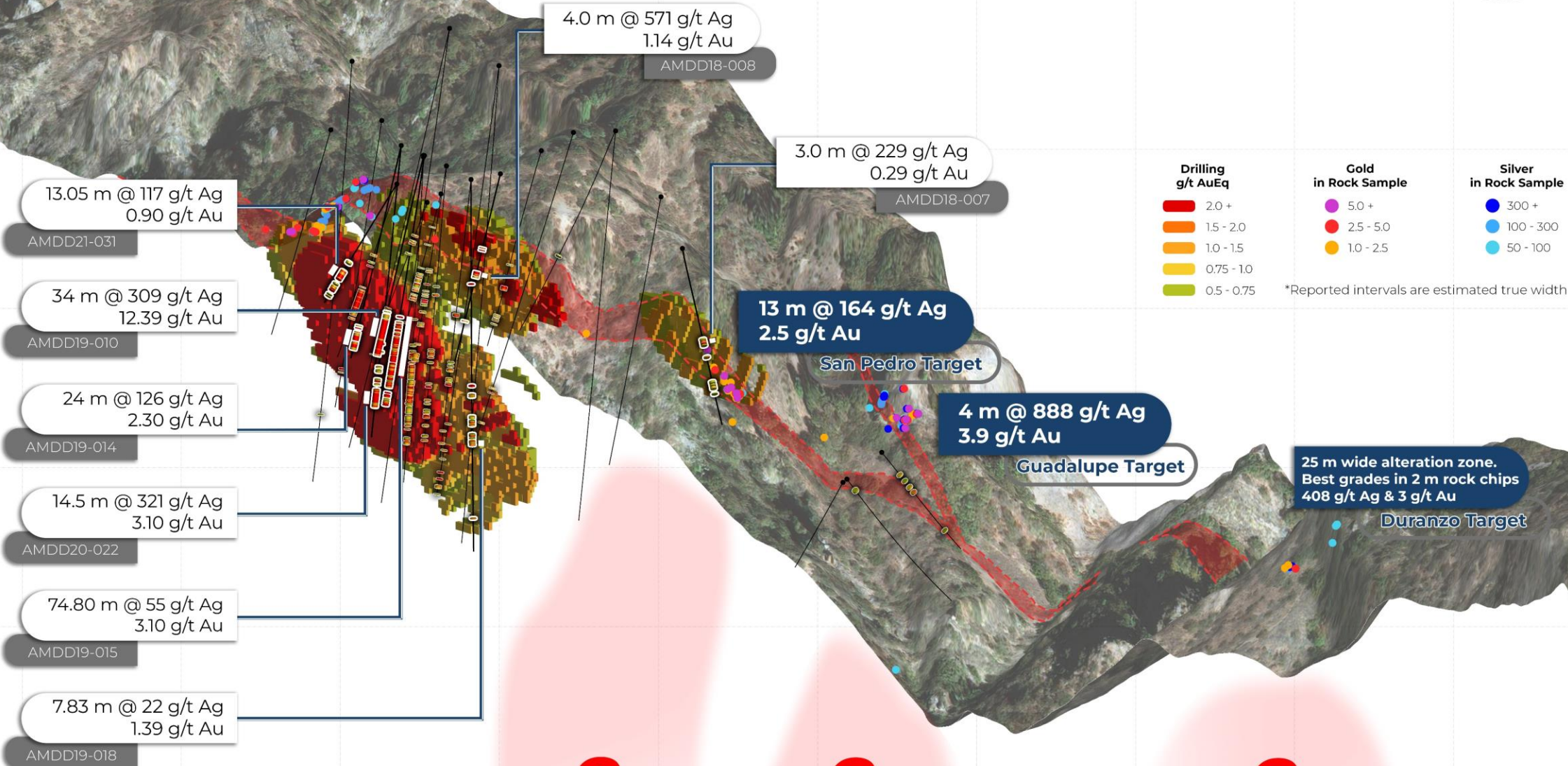
*\*Reported intervals are estimated true width*

# AMALIA PROJECT PLAN MAP





# 3D AMALIA MAP

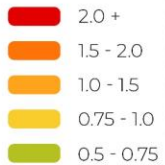




# El Cuervo 3D Map



## Drilling g/t AuEq



## Silver in Rock Sample



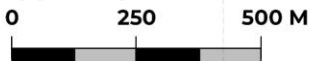
## Gold in Rock Sample



\*Reported intervals are estimated true width



**RADIUS**  
GOLD INC.



10.14 m @ 84 g/t Ag  
0.75 g/t Au

AMDD22-048

**El Cuervo North Target**

3.77 m @ 401 g/t Ag  
0.79 g/t Au

AMDD22-061

**El Cuervo South Target**

10.61 m @ 450 g/t Ag  
1.31 g/t Au

AMDD22-052

15.15 m @ 438 g/t Ag  
0.8 g/t Au

AMDD22-065

10.82 m @ 841 g/t Ag  
10.25 g/t Au

AMDD22-066

5.17 m @ 101 g/t Ag  
0.92 g/t Au

AMDD22-055

4.02 m @ 197 g/t Ag  
1.03 g/t Au

AMDD22-063

53.0 m @ 232 g/t Ag  
0.65 g/t Au

AMDD21-047

13.67 m @ 53 g/t Ag  
1.11 g/t Au

AMDD22-051

11.18 m @ 117 g/t Ag  
0.92 g/t Au

AMDD21-050

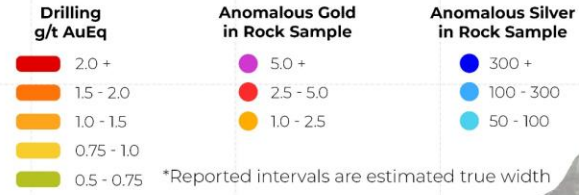
15.26 m @ 253 g/t Ag  
0.92 g/t Au

AMDD22-049

**EXPANSION TARGETS**



# 3D California Map



Multiple high grade gold rock chips to +20 g/t Au  
Oro Viejo Target

4.82 m @ 120 g/t Ag  
0.78 g/t Au  
AMDD21-040

20.3 m @ 353 g/t Ag  
2.59 g/t Au  
AMDD21-039

50.04 m @ 60 g/t Ag  
0.05 g/t Au  
AMDD21-045

9.48 m @ 259 g/t Ag  
0.54 g/t Au  
AMDD21-043

Best surface result  
2 m @ 0.6 g/t Au  
193 g/t Ag

California

9.06 m @ 379 g/t Ag  
1.26 g/t Au  
AMDD21-038

29.47 m @ 204 g/t Ag  
0.35 g/t Au  
AMDD21-044

3.58 m @ 487 g/t Ag  
2.15 g/t Au  
AMDD21-034

24.74 m @ 90 g/t Ag  
0.26 g/t Au  
AMDD21-032

1.59 m @ 578 g/t Ag  
0.27 g/t Au  
AMDD21-036

23.66 m @ 50 g/t Ag  
0.05 g/t Au  
AMDD21-033



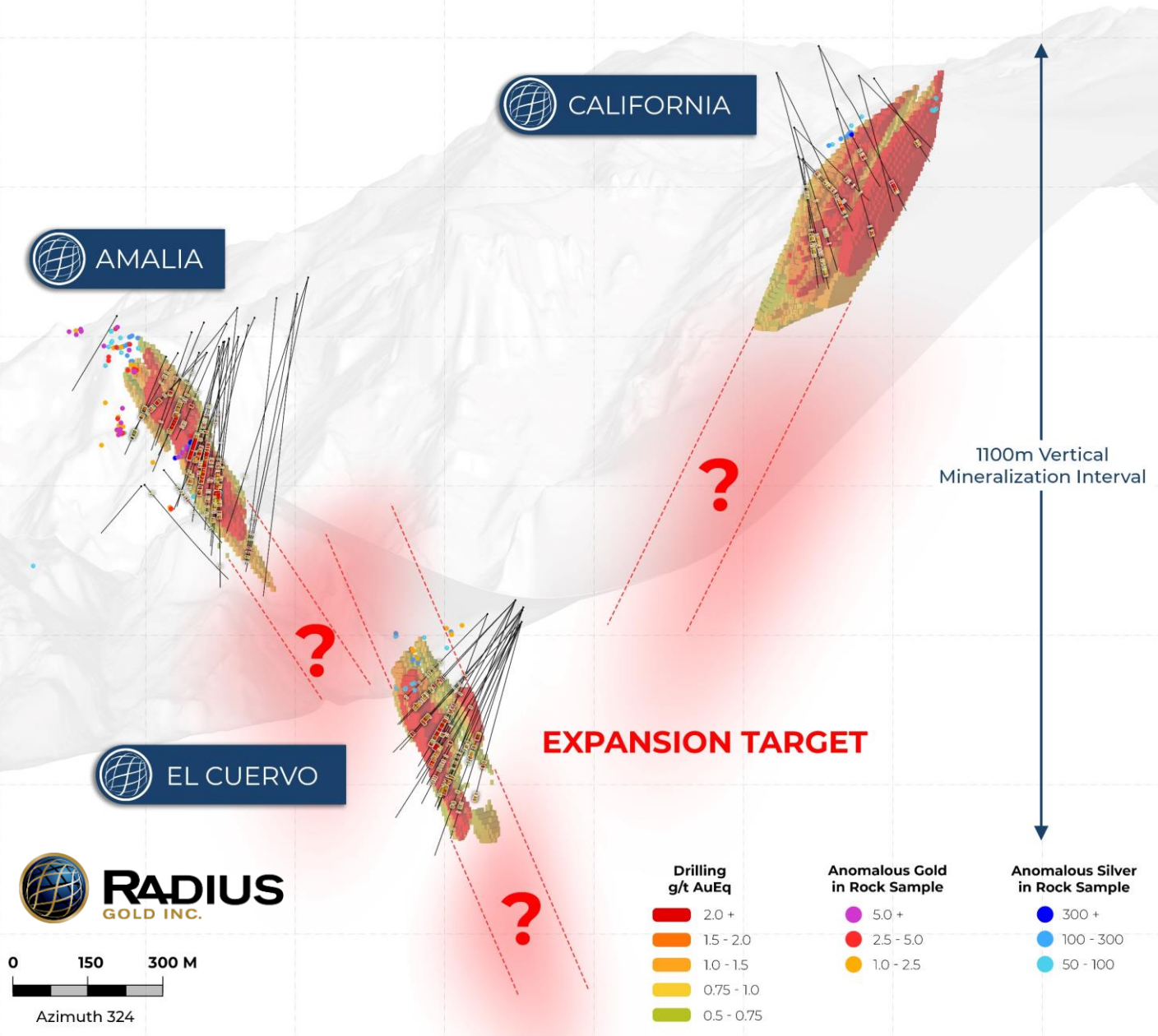
Application Granted Mining Concession

EXPANSION TARGET



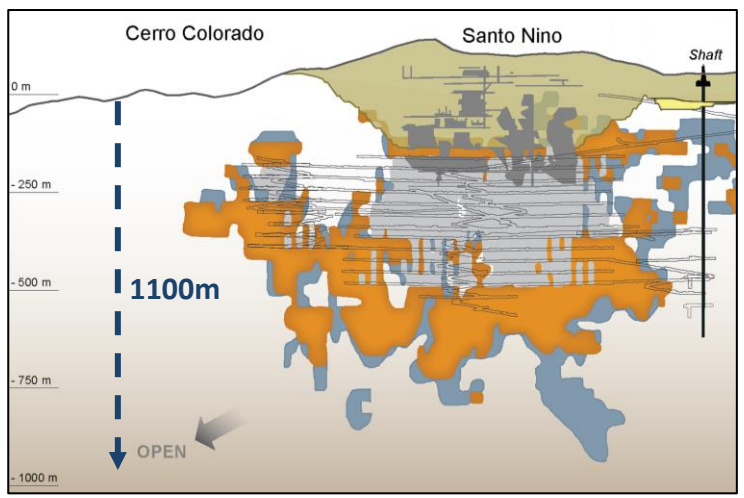
# Amalia Strike & Depth Potential

1100m drill defined depth potential (open)  
Multiple targets over 12km of mineralization structures

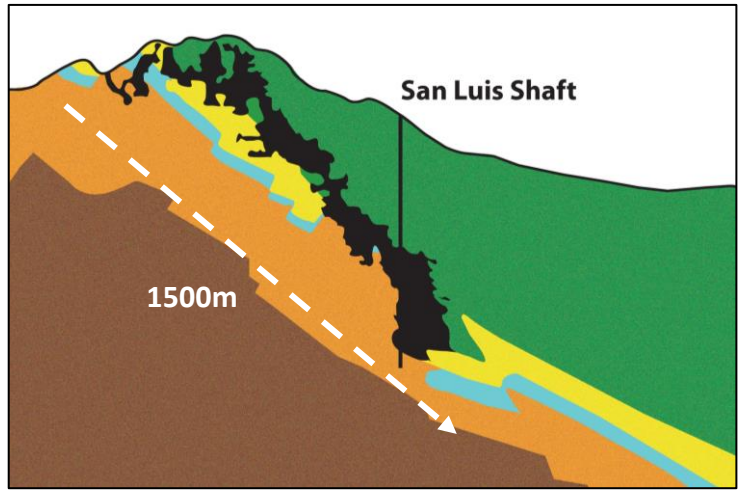


## Giant gold silver deposits of Sierra Madre have depth extents of >1km

Agnico's Pinos Altos Mine. Historic 3.6 Moz Au 100 Moz Ag



First Majestic's - San Dimas Mine. Historic 11 Moz Au 500 Moz Ag





# Guatemala

## Eastern Guatemala Properties 40/60 JV

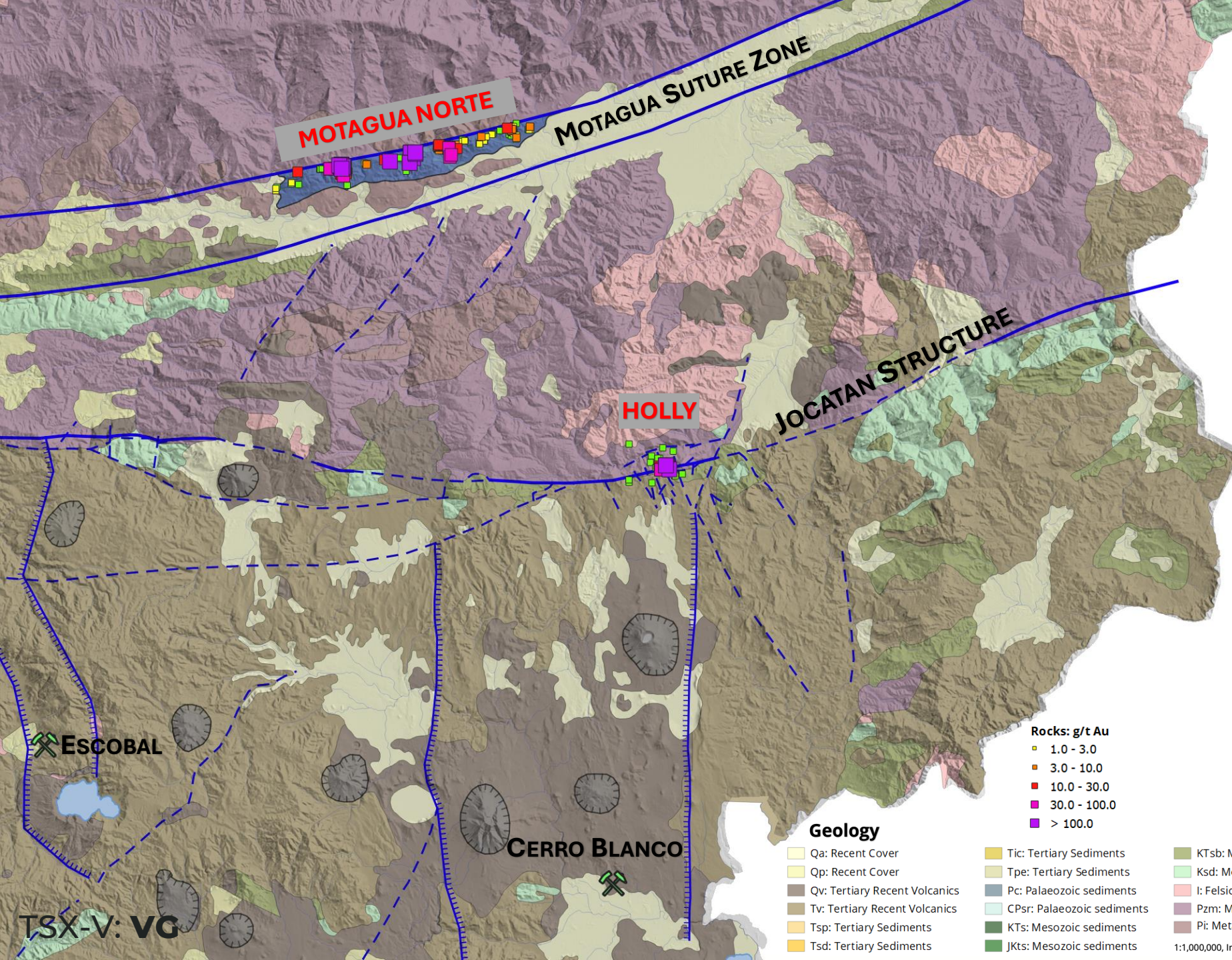
Radius Gold / Volcanic Gold Mines

### HOLLY PROJECT

- Low sulphidation epithermal veins on the regional Jocotan Structure.
- 410 koz at 9.6 g/t AuEq inferred.
- Application for exploitation license underway.

### MOTAGUA NORTE PROJECT

- 25 km gold belt discovery.
- Orogenic veins within the Motagua suture zone.
- First exploration license granted in the belt.
- Additional exploration licenses under application and negotiation.





# RADIUS PROJECTS & REVALUATION TRIGGERS

## 100% RADIUS TIERRA ROJA



Peru – Copper Project

Potential for discovery of high-grade copper porphyry

Work program:

- Detailed geological mapping
- Sampling
- Ground magnetics
- IP Resistivity
- Drill testing



## EVALUATING NEW PROJECTS



Base & Precious Metals

Pipeline of new projects under evaluation

Expects to be able to deliver new projects in the coming months



## AMALIA JV



Mexico – Gold & Silver

Resumption of exploration & resource definition drilling

Resource calculation



## GUATAMALA JV



Guatemala – Gold

Granting of mining permit for Holly project

Construction of Cerro Blanco mine (Bluestone Resources)

Re-activate Escobal mine (Pan American Silver)





# RADIUS GOLD INC

## CORPORATE STRUCTURE

**CASH HOLDINGS – \$690,000 <sup>1</sup>**  
**EQUITIES – \$517,000 <sup>2</sup>**

(1) As of October 30, 2024  
(2) As of November 1, 2024 and includes Rackla Metals Inc., Volcanic Gold Mines Inc. and Electrum Discovery Corp.

107.41M	6.37M	19.67M	133.45M	Cdn \$0.12*	Cdn \$10.74M*	~11%*
ISSUED SHARES	OPTIONS	WARRANTS	FULLY DILUTED	TRADING PRICE	MARKET CAP	MANAGEMENT
						*May 15, 2025

### MANAGEMENT & BOARD OF DIRECTORS



**Simon Ridgway**  
Executive Chairman,  
Director



**Bruce Smith**  
Director, CEO,  
President



**Mario Szotlender**  
Director



**William Katzin**  
Director



**Javier Castaneda**  
Chief Geologist  
Mexico



**Areli Moya**  
Country & Legal Representative



**Felix Ceron**  
Project Geologist  
Peru





**RADIUS**  
GOLD INC.

### Contact Info

Email: [bsmith@goldgroup.com](mailto:bsmith@goldgroup.com)

Telephone: +1604801-5432

Mobile: +164221883763

[Radiusgold.com](http://Radiusgold.com)