



RADIUS
GOLD INC.

Relentless Exploration - Great Discoveries

TIERRA ROJA **COPPER** PROJECT, PERU



FORWARD-LOOKING STATEMENTS & QUALIFIED PERSON

Cautionary Notes and Disclaimers

Certain statements contained in this presentation constitute forward-looking statements within the meaning of Canadian securities legislation. All statements included herein, other than statements of historical fact, are forward-looking statements which may include, without limitation, statements about the Company's plans for its investments and properties; the Company's business strategy, plans and outlook; the merit of the Company's investments and properties; timelines; the future financial performance of the Company; expenditures; approvals and other matters. Often, but not always, these forward looking statements can be identified by the use of words such as "estimate", "estimates", "estimated", "potential", "open", "future", "assumed", "projected", "used", "detailed", "has been", "gain", "upgraded", "offset", "limited", "contained", "reflecting", "containing", "remaining", "to be", "periodically", or statements that events, "could" or "should" occur or be achieved and similar expressions, including negative variations.

Forward-looking statements involve known and unknown risks, uncertainties and other factors which may cause the actual results, performance or achievements of the Company to be materially different from any results, performance or achievements expressed or implied by forward-looking statements. Such uncertainties and factors include, among others, changes in general economic conditions and financial markets; the Company or any joint venture partner not having the financial ability to meet its exploration and development goals; risks associated with the results of exploration and development activities, estimation of mineral resources and the geology, grade and continuity of mineral deposits; unanticipated costs and expenses; and such other risks detailed from time to time in the Company's quarterly and annual filings with securities regulators and available under the Company's profile on SEDAR+ at www.sedarplus.ca. Although the Company has attempted to identify important factors that could cause actual actions, events or results to differ materially from those described in forward-looking statements, there may be other factors that cause actions, events or results to differ from those anticipated, estimated or intended.

Forward-looking statements contained herein are based on the assumptions, beliefs, expectations and opinions of management, including but not limited to expectations that the Company's activities will be in accordance with its public statements and stated goals; that all required approvals will be obtained; that there will be no material adverse change affecting the Company, its investments or properties; and such other assumptions as set out herein. Forward-looking statements are made as of the date hereof and the Company disclaims any obligation to update any forward-looking statements, whether as a result of new information, future events or results or otherwise, except as required by law. There can be no assurance that forward-looking statements will prove to be accurate, as actual results and future events could differ materially from those anticipated in such statements. Accordingly, investors should not place undue reliance on forward-looking statements.

Under the terms of NI43-101, Bruce Smith, M.Sc., MAIG. is Radius' Qualified Person.

Mr. Smith holds B.Sc. and M.Sc. degrees in geology from Otago University, New Zealand, and MEng degree water and environmental resources from the IHE, Delft, Netherlands. He has been involved in mineral exploration since 1992, working mostly in precious metal deposits, but also copper, base metals, iron, lithium, uranium and mineral sands. Mr. Smith has worked throughout the world on a large variety of projects including in Africa, Europe, Asia, the Pacific, and North and South America, and speaks Spanish fluently. Mr. Smith is a member of the Australian Institute of Geoscientists (No6848) and a "Qualified Person" in accordance with National Instrument 43-101 and has reviewed and takes responsibility for the technical information contained in this presentation.

Tierra Roja Project, Peru

Copper Target



Option for 100% Ownership

Land

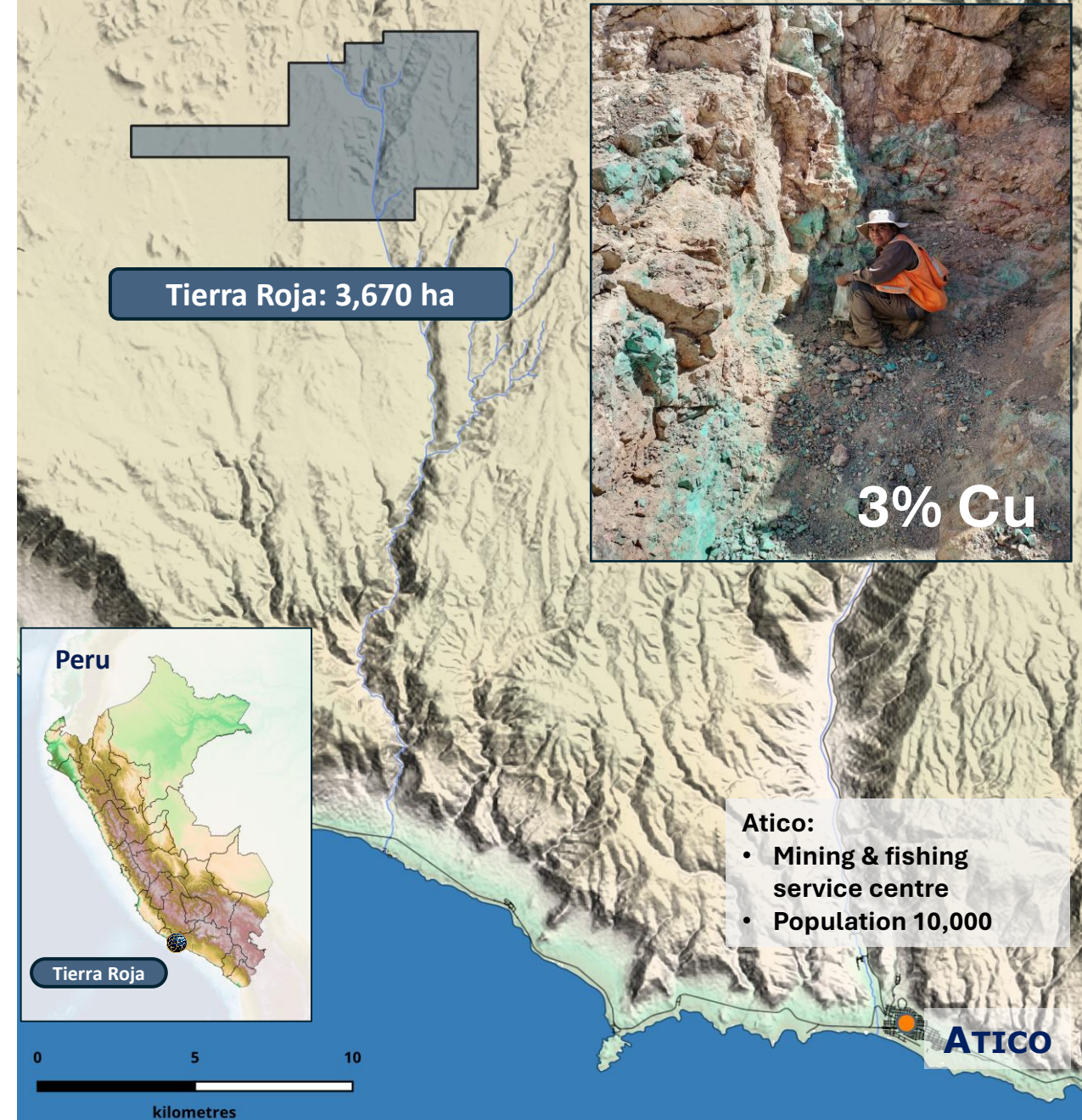
- 3,670 ha land position
- Accessible from Atico (34 km to SE); 20 km from coast
- Recent discovery with no previous systematic exploration or drilling.

Potential

- Located in a prolific geological copper belt
- Peru is **second largest copper producer globally** (2.5Mtpa)
- Southwest Peru alone rates as top 5 copper producer globally
- Mining Friendly: Mining comprises over 60% of exports & 10% of GDP
- Oxide projects advantage of building low-cost heap-leach mines.

2026 Work program

- Completed detailed field mapping and geochemistry
- Geophysics completed: 67 km ground magnetics; 4.8 km 2D DCIP
- Team is fully prepared, with clearly defined drill targets ready for execution once permits are in hand



Southwest Peru: World Class Copper District

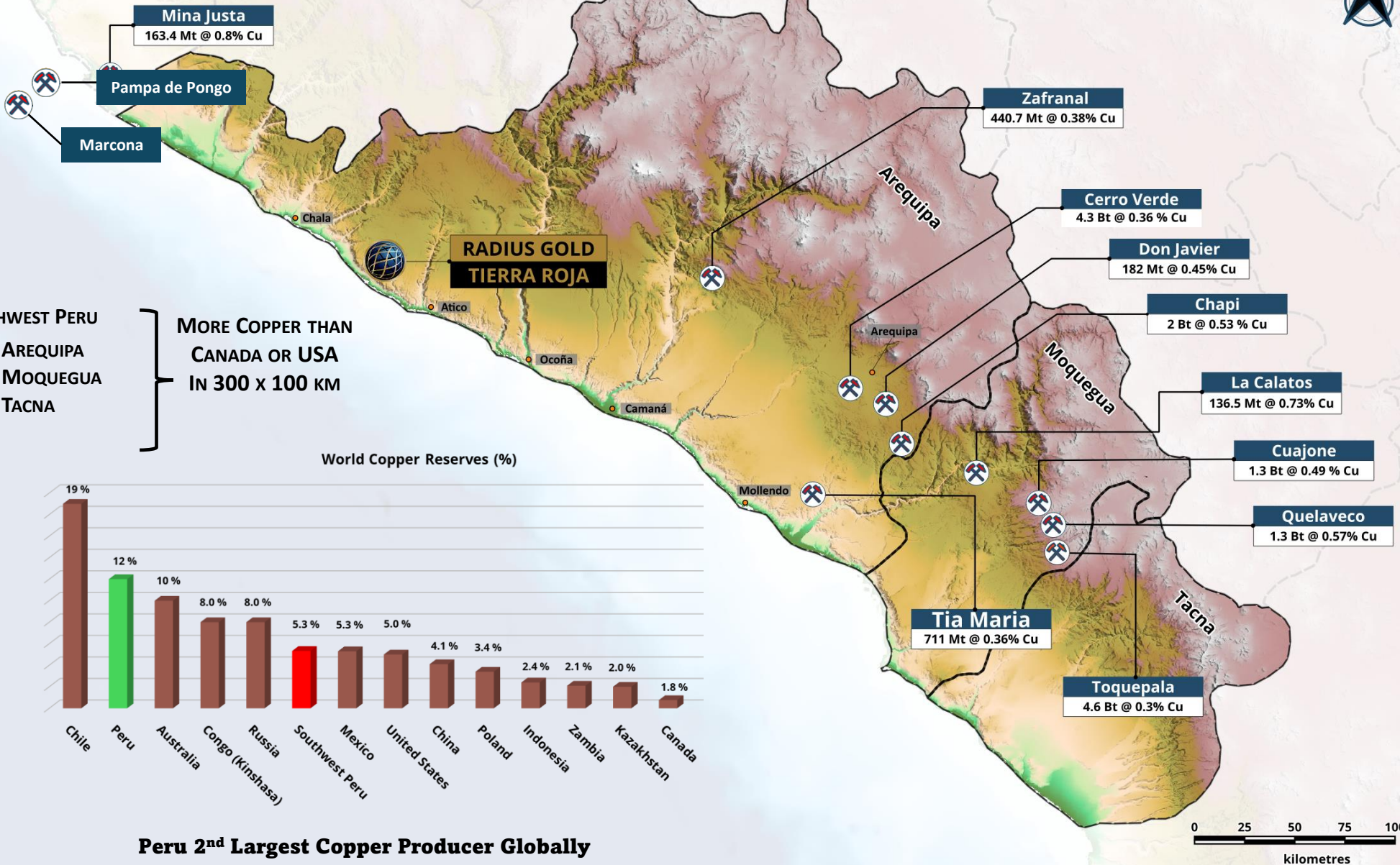


- SOUTHWEST PERU**
- AREQUIPA
 - MOQUEGUA
 - TACNA

MORE COPPER THAN CANADA OR USA IN 300 X 100 KM



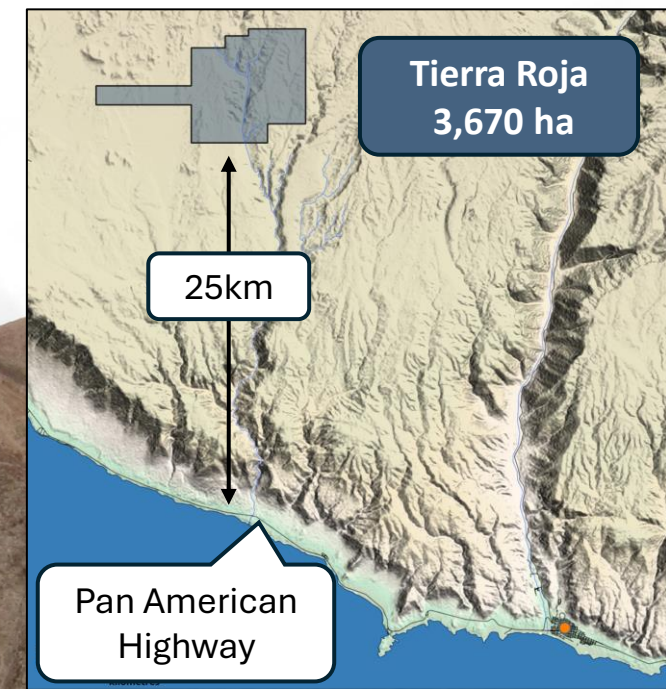
Southwest Peru contains 59 % of Peru's Copper Reserves



Peru 2nd Largest Copper Producer Globally

Tierra Roja Copper Project

Federal lands, No community
Permitting underway &
Low-cost exploration
Option 100%



Tierra Roja A Hidden Discovery

Core of the property hosts an 800 meter diameter circular anomaly with wide-spread ferruginous, sulphate soil crust developed over strong clay, sericite and silica alteration.

In arid climates sulphate crusts can indicate underlying copper mineralization. The presence suggests that sulfide oxidation and leaching have occurred, which may point to deeper copper enrichment zones.

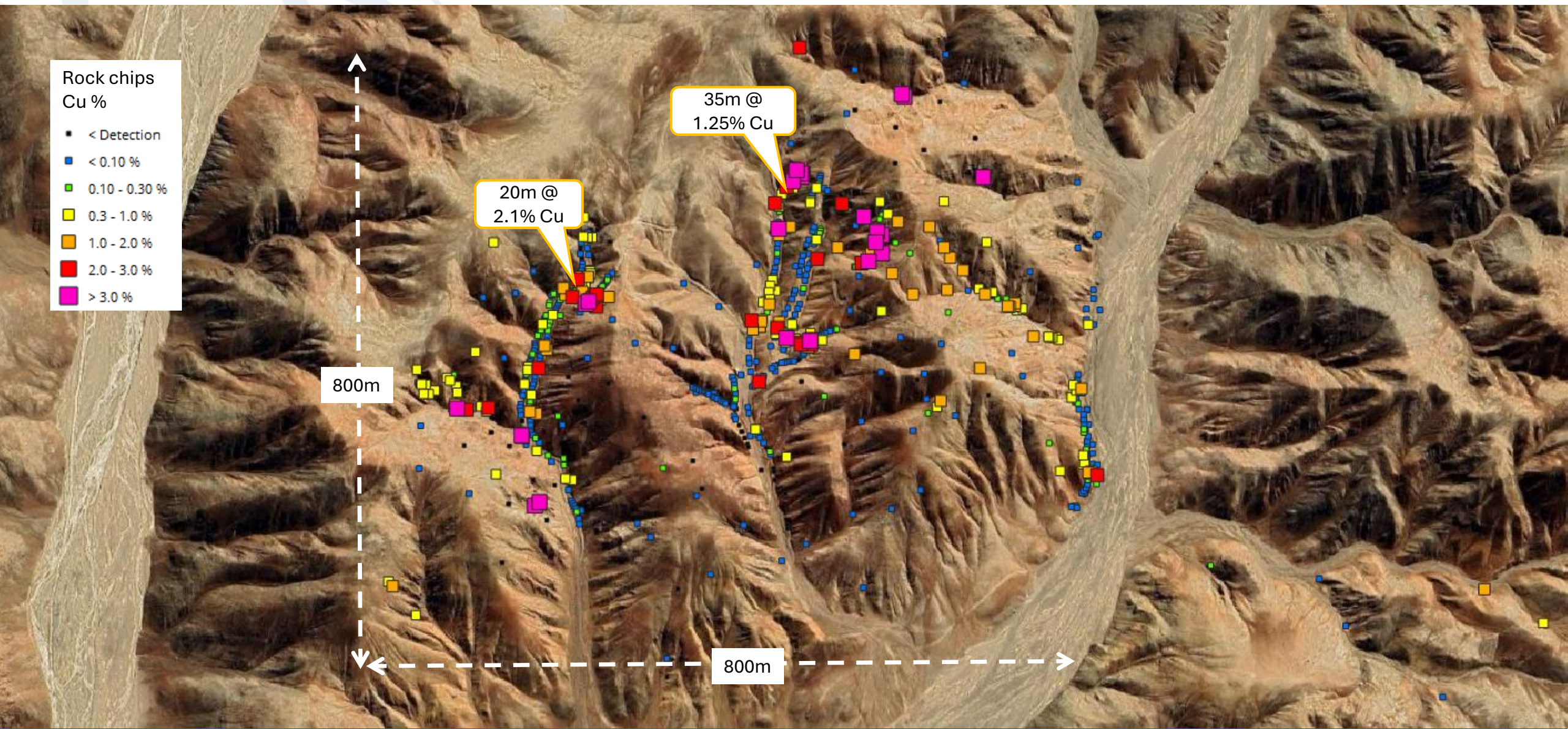
The rusty clay sulphate crust is a few meters thick and largely hides the underlying copper oxide mineralization.

The property optionor, Mr. Montoya, a Peruvian geologist with over 50 years field experience, including senior positions with copper companies: Asarco Inc (Central America, Chile), Lowell Mineral Exploration (Chile, Peru), TVX Gold (Peru, Mexico) and Minsur (Peru), recognized the remote colour anomaly and the significance of the sulphate crust and staked the project.

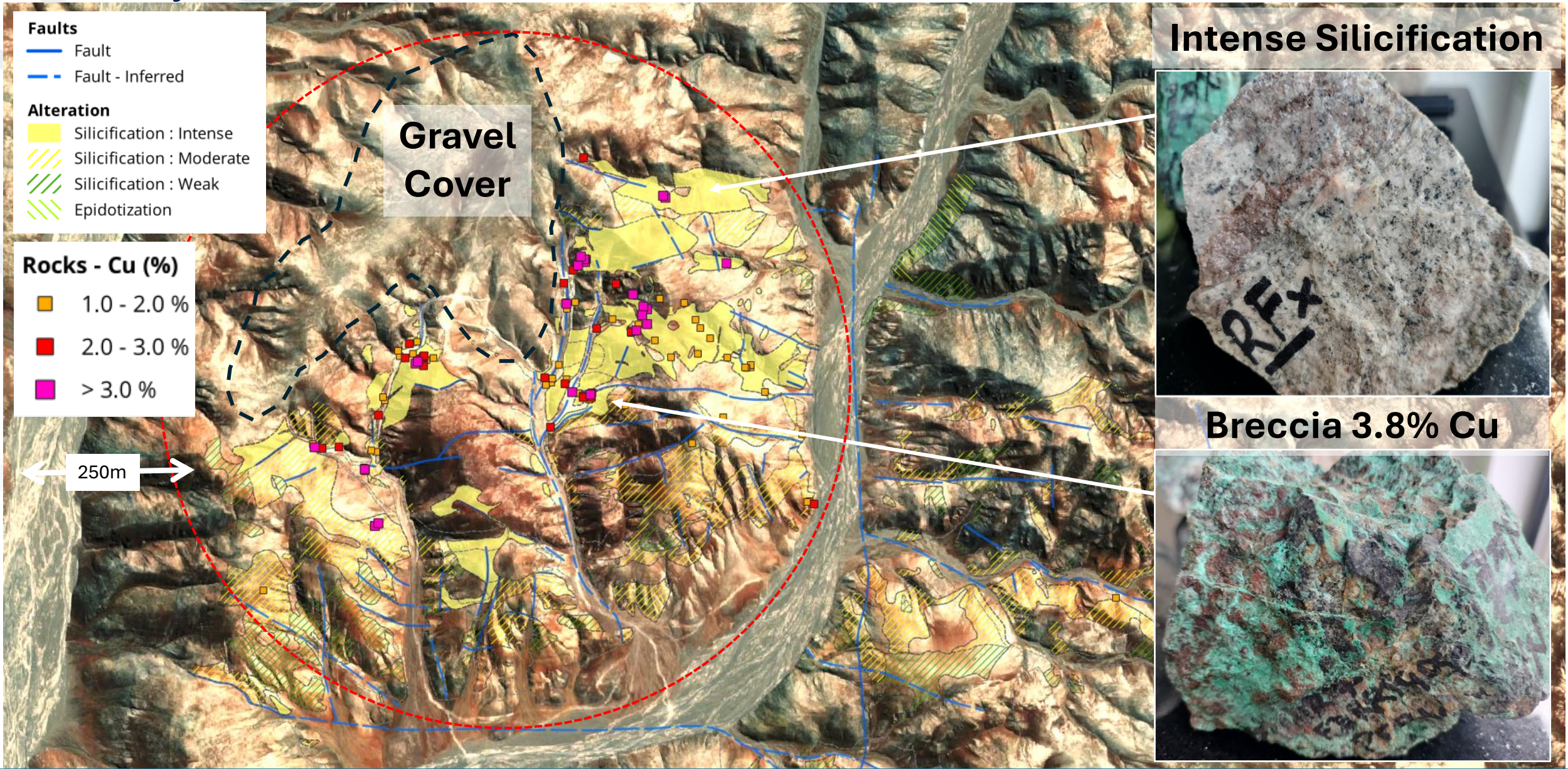
Mr. Montoya cut road access with a bulldozer, breaking the ferruginous sulphate crust, and exposed widespread oxide copper mineralization covering an area of 800m x 600m.



Tierra Roja – Geochemistry: widespread and high-grade copper oxides

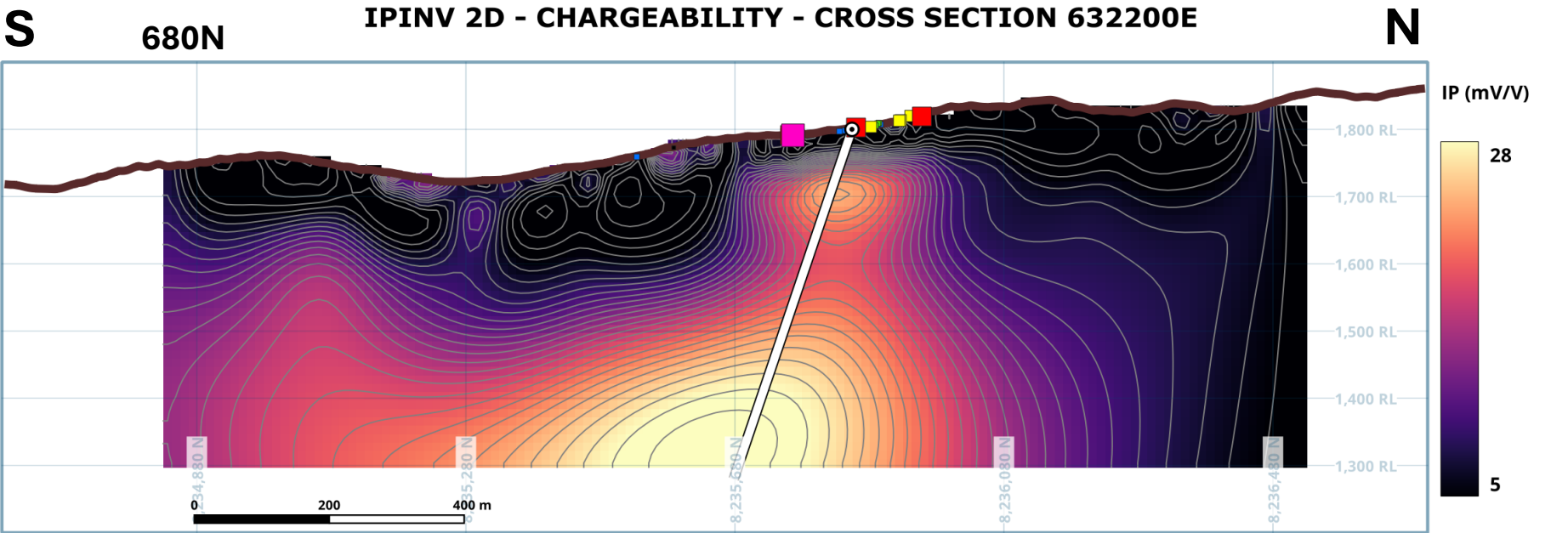
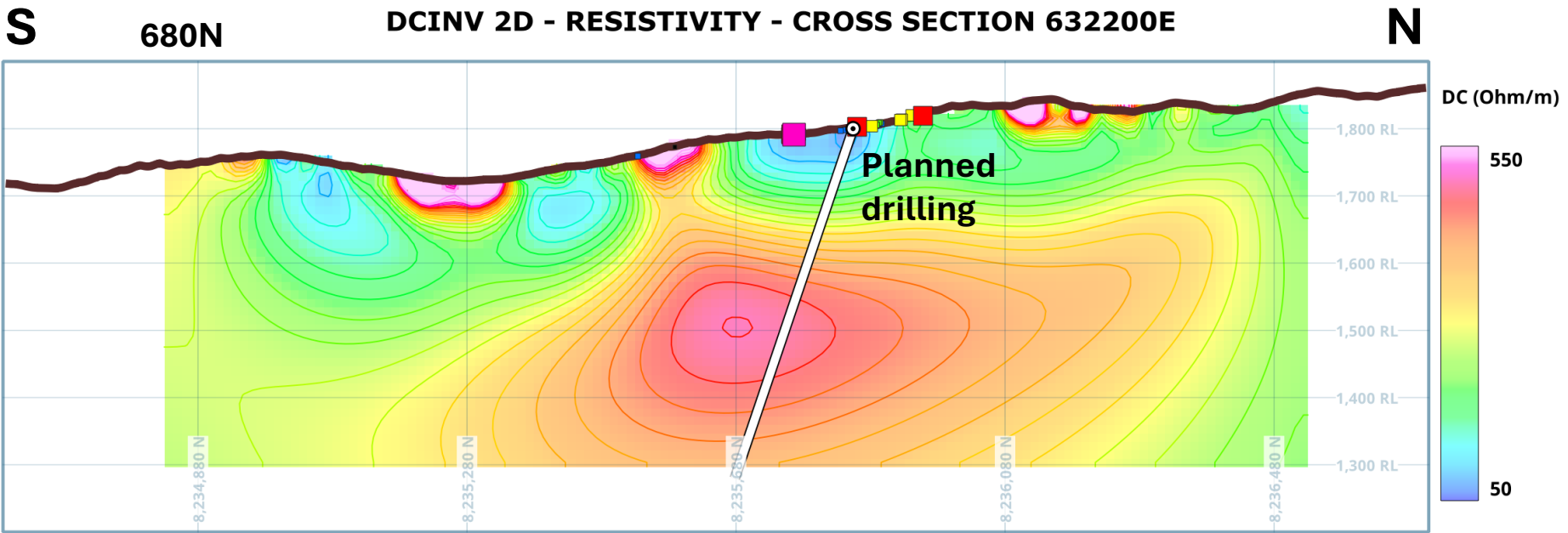
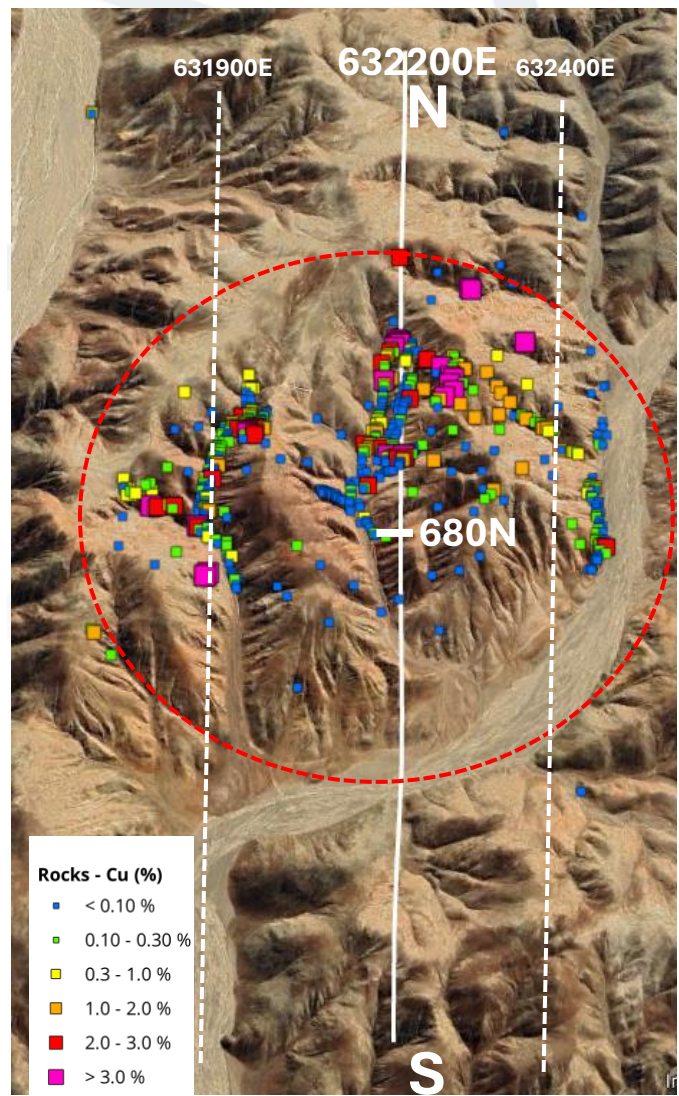


Tierra Roja – Alteration: Large scale (800m x 800m) circular target

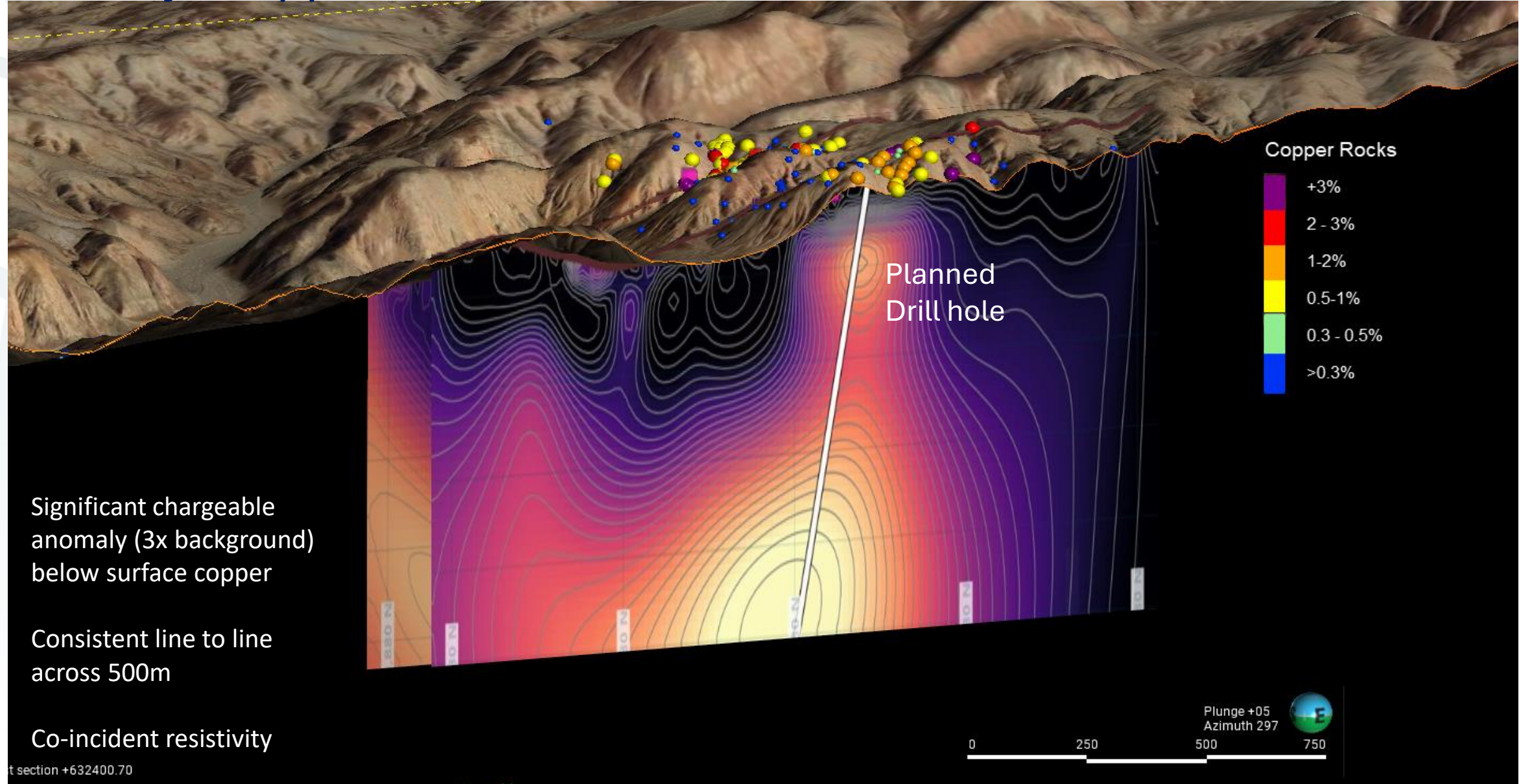


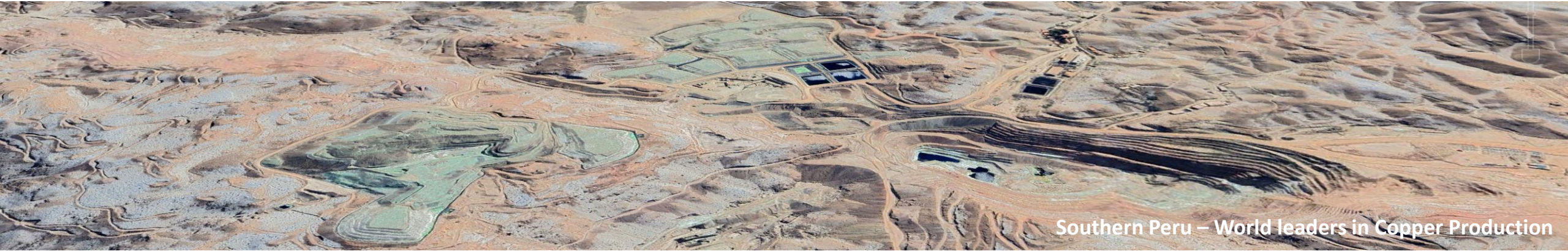
Tierra Roja

Geophysics: IP/Res & Planned drill holes



Tierra Roja Copper IP Geophysics Section:





Southern Peru – World leaders in Copper Production

South Peru: Economic Advantages of Accessible, Surface Oxide Copper

1. Access to Low-Grade Low-Strip open pit

Potentially economic to process low-grade ore, extending resource life.

2. Simplified Extraction and Processing

Oxide ores at/near surface are easier and cheaper to mine.

Heap leaching enables copper extraction skipping costly flotation and milling.

2. Lower Processing Costs with Heap Leaching

Cost-effective method that reduces capital expenses.

Minimal setup time, leveraging southern Peru's dry climate for operational efficiency.

3. Reduced Time to Production

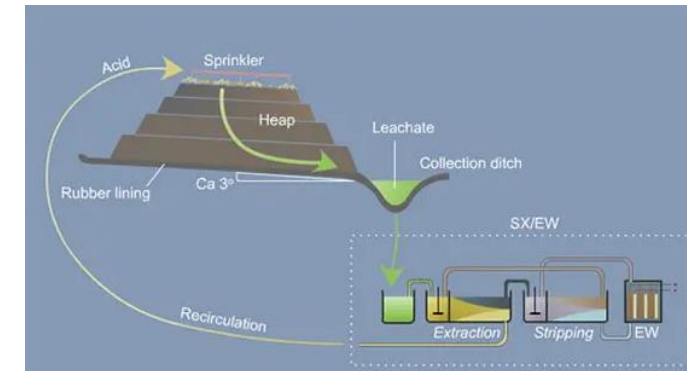
Faster transition to production boosts early cash flow.

Quick establishment of heap leach facilities, shortening the payback period.

4. Lower Environmental Impact

Reduced need for water and chemicals, and fewer waste byproducts.

Helps meet regulatory and community standards at lower costs.



Simple
Low Cost
Copper



Amalia Project, Mexico

35 / 65%

Joint Venture



Land & Discoveries

- 10,250 ha land position
- 3 significant discoveries to date
- 23,058 m Drilling completed in 67 holes

Mineral Grades

High grade & wide silver-gold drill intercepts

Location

- Located 25 km SW of the historic Guadalupe y Calvo mining district in Chihuahua

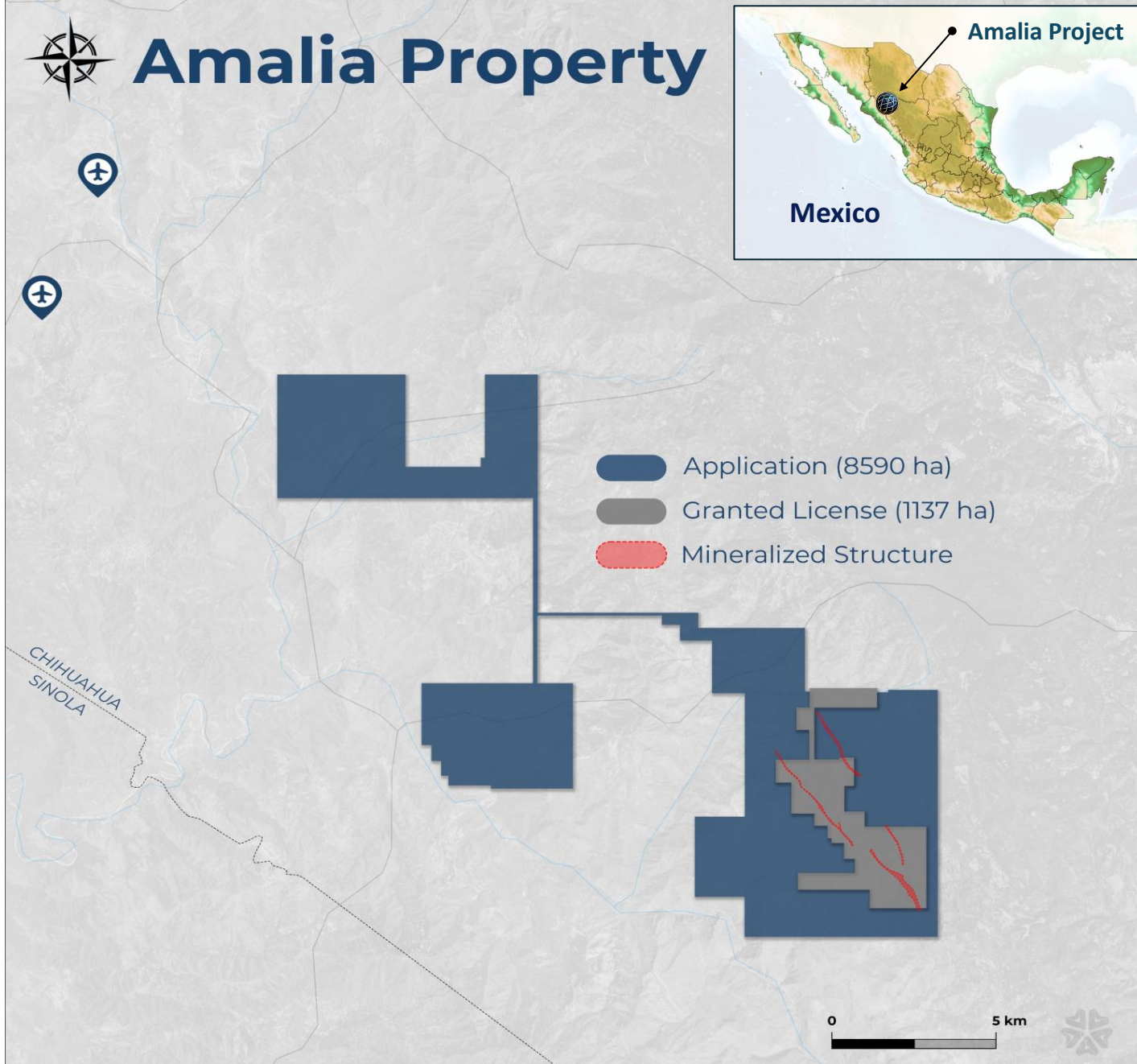
Structural Trends

- Three major structural trend
- Combined 12 km strike length

Next Steps

- Resource expansion & definition
- Metallurgical testing

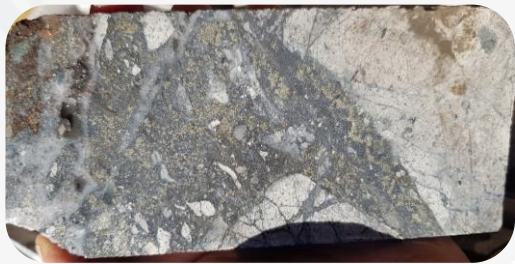
Amalia Property



1

Amalia Central
3 km vein & breccia

*granted mining concession



2

El Cuervo
+1 km vein & breccia

*granted mining concession



3

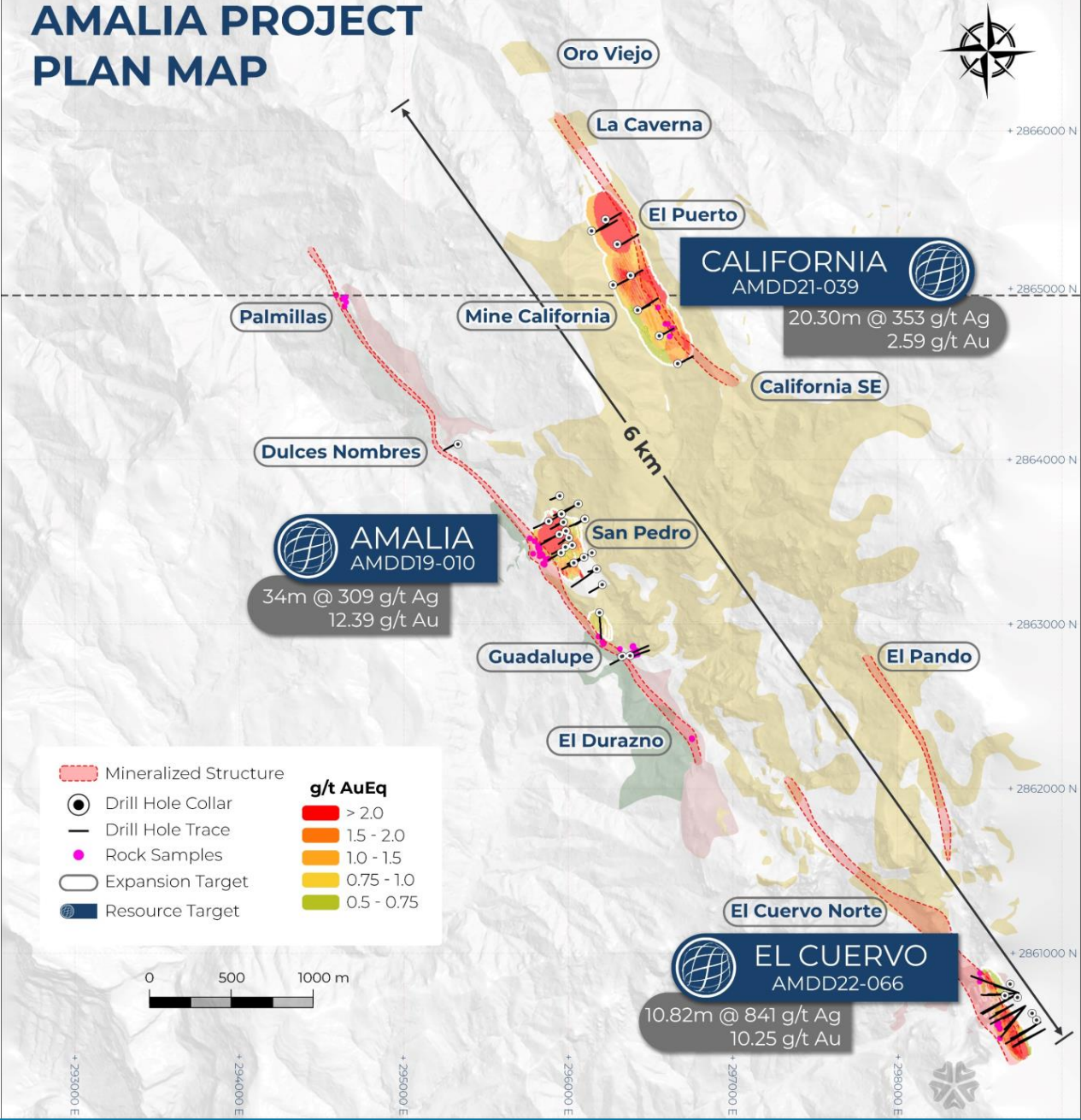
California
2.8 km vein & breccia

*partially located on license application

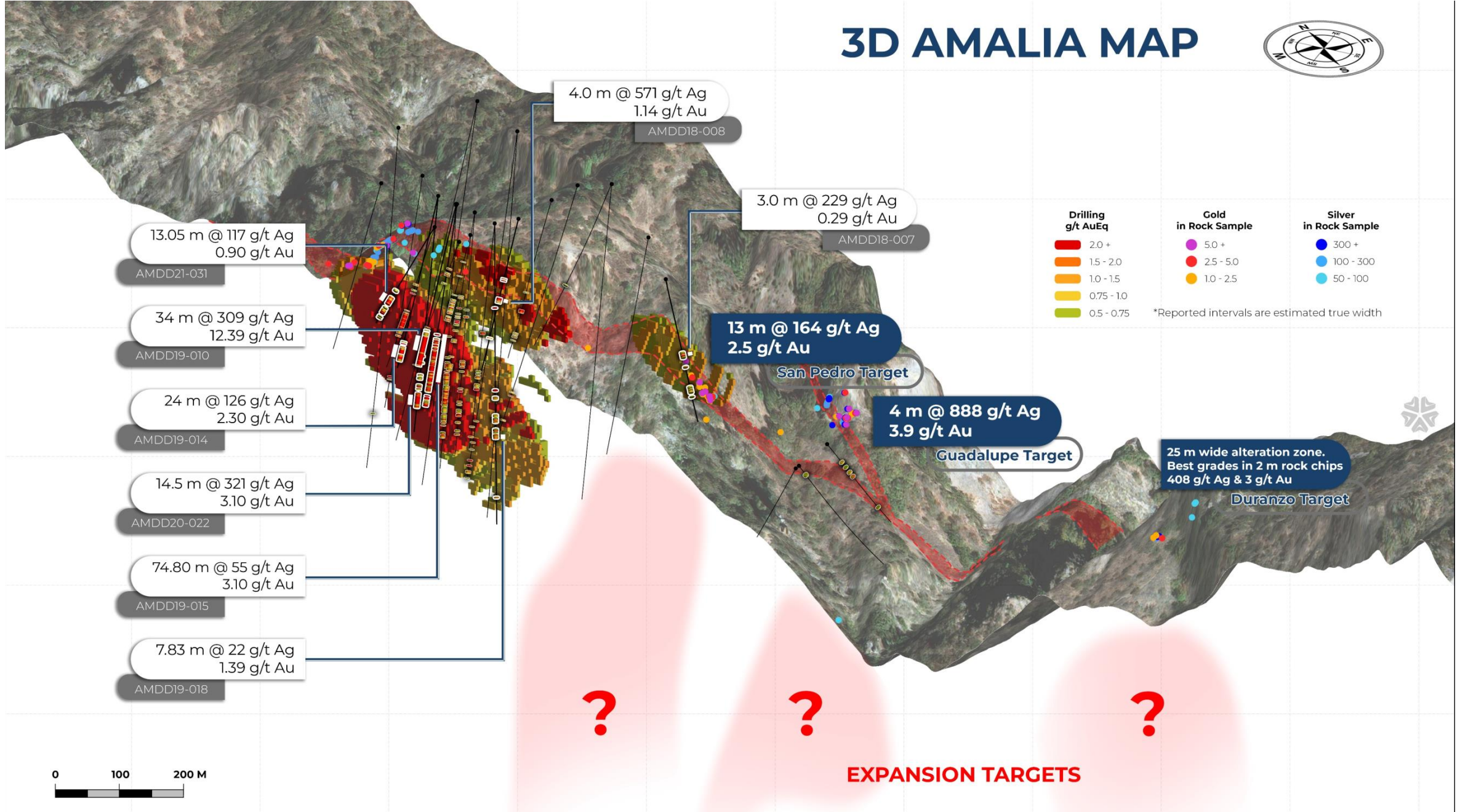


**Reported intervals are estimated true width*

AMALIA PROJECT PLAN MAP



3D AMALIA MAP



0 100 200 M

El Cuervo 3D Map

Drilling g/t AuEq



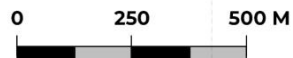
Silver in Rock Sample



Gold in Rock Sample



*Reported intervals are estimated true width



10.14 m @ 84 g/t Ag
0.75 g/t Au

AMDD22-048

El Cuervo North Target

3.77 m @ 401 g/t Ag
0.79 g/t Au

AMDD22-061

El Cuervo South Target

10.61 m @ 450 g/t Ag
1.31 g/t Au

AMDD22-052

15.15 m @ 438 g/t Ag
0.8 g/t Au

AMDD22-065

10.82 m @ 841 g/t Ag
10.25 g/t Au

AMDD22-066

5.17 m @ 101 g/t Ag
0.92 g/t Au

AMDD22-055

4.02 m @ 197 g/t Ag
1.03 g/t Au

AMDD22-063

53.0 m @ 232 g/t Ag
0.65 g/t Au

AMDD21-047

13.67 m @ 53 g/t Ag
1.11 g/t Au

AMDD22-051

11.18 m @ 117 g/t Ag
0.92 g/t Au

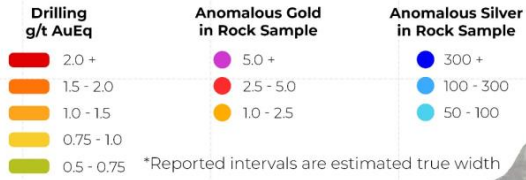
AMDD21-050

15.26 m @ 253 g/t Ag
0.92 g/t Au

AMDD22-049

EXPANSION TARGETS

3D California Map



Multiple high grade gold rock chips to +20 g/t Au
Oro Viejo Target

4.82 m @ 120 g/t Ag
0.78 g/t Au
AMDD21-040

20.3 m @ 353 g/t Ag
2.59 g/t Au
AMDD21-039

50.04 m @ 60 g/t Ag
0.05 g/t Au
AMDD21-045

9.48 m @ 259 g/t Ag
0.54 g/t Au
AMDD21-043

Best surface result
2 m @ 0.6 g/t Au
193 g/t Ag
California

9.06 m @ 379 g/t Ag
1.26 g/t Au
AMDD21-038

29.47 m @ 204 g/t Ag
0.35 g/t Au
AMDD21-044

3.58 m @ 487 g/t Ag
2.15 g/t Au
AMDD21-034

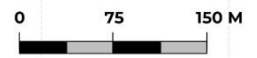
24.74 m @ 90 g/t Ag
0.26 g/t Au
AMDD21-032

1.59 m @ 578 g/t Ag
0.27 g/t Au
AMDD21-036

23.66 m @ 50 g/t Ag
0.05 g/t Au
AMDD21-033

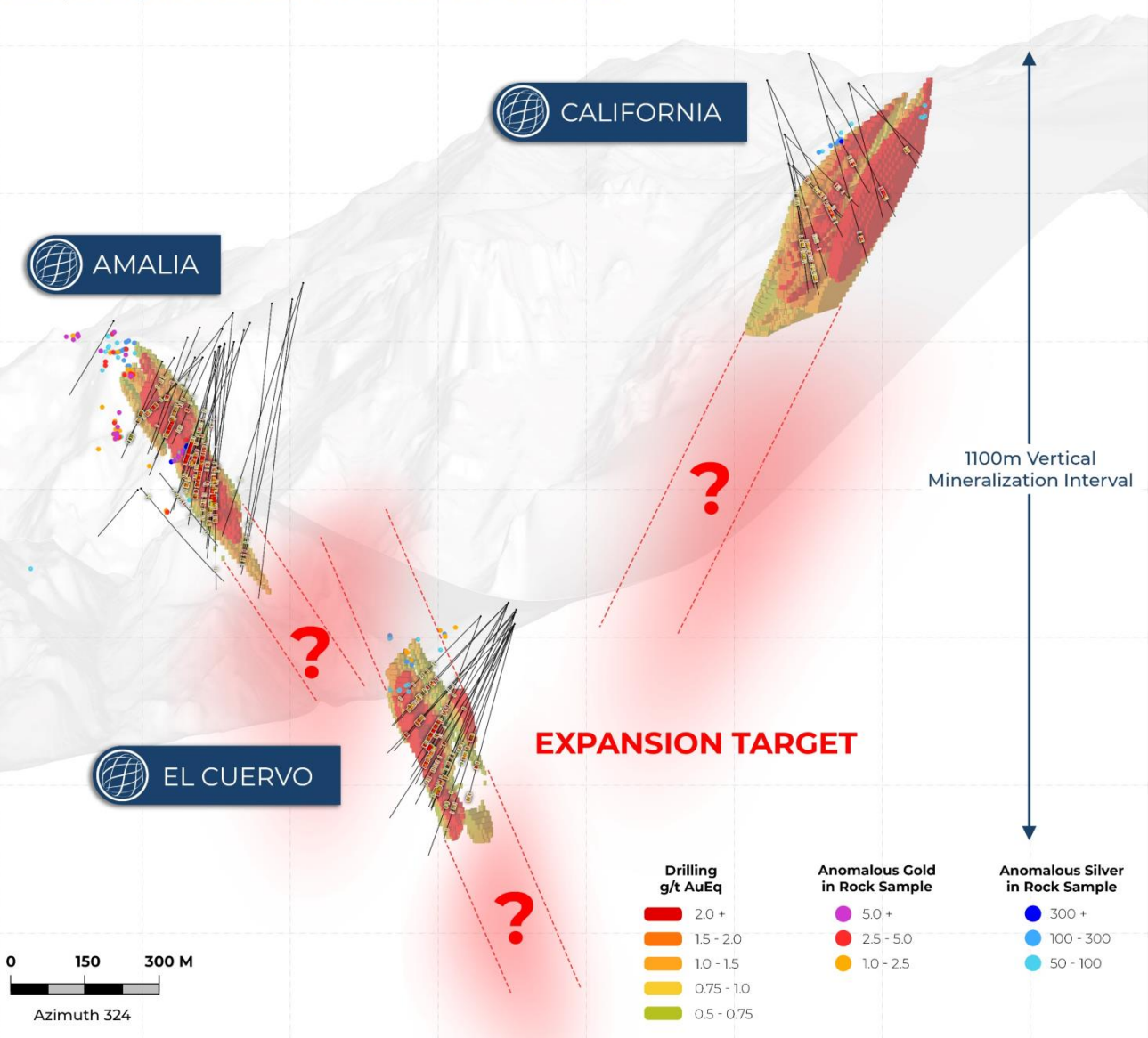
Application Granted Mining Concession

EXPANSION TARGET



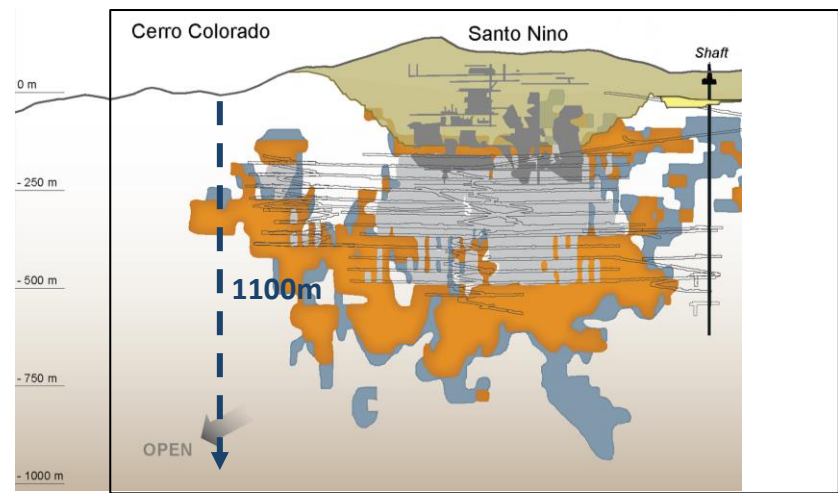
Amalia Strike & Depth Potential

1100m drill defined depth potential (open)
Multiple targets over 12km of mineralization structures

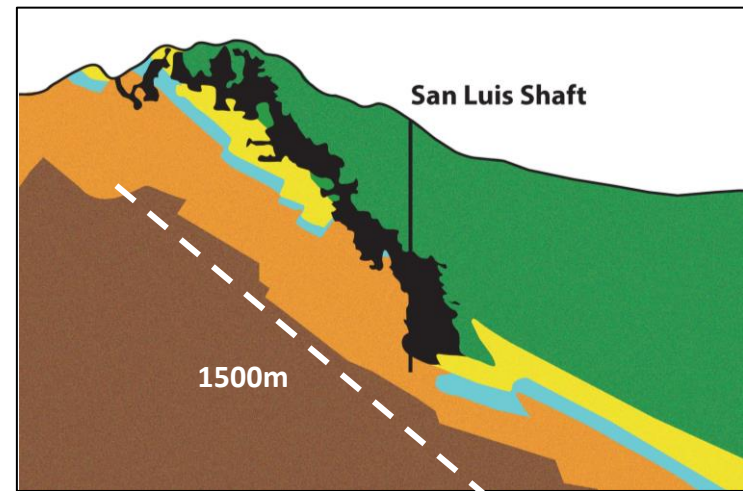


Giant gold silver deposits of Sierra Madre have depth extents of >1km

Agnico's Pinos Altos Mine. Historic 3.6 Moz Au 100 Moz Ag



First Majestic's - San Dimas Mine. Historic 11 Moz Au 500 Moz Ag



Holly Project, Guatemala



RADIUS
GOLD INC.

VOLCANIC
— Gold Mines Inc —



The Right Team

25 years with same management and geological team.



Proven Success

Discovered San Martin, Cerro Blanco, Tambor, Pavon & San Jose deposits in Central America.



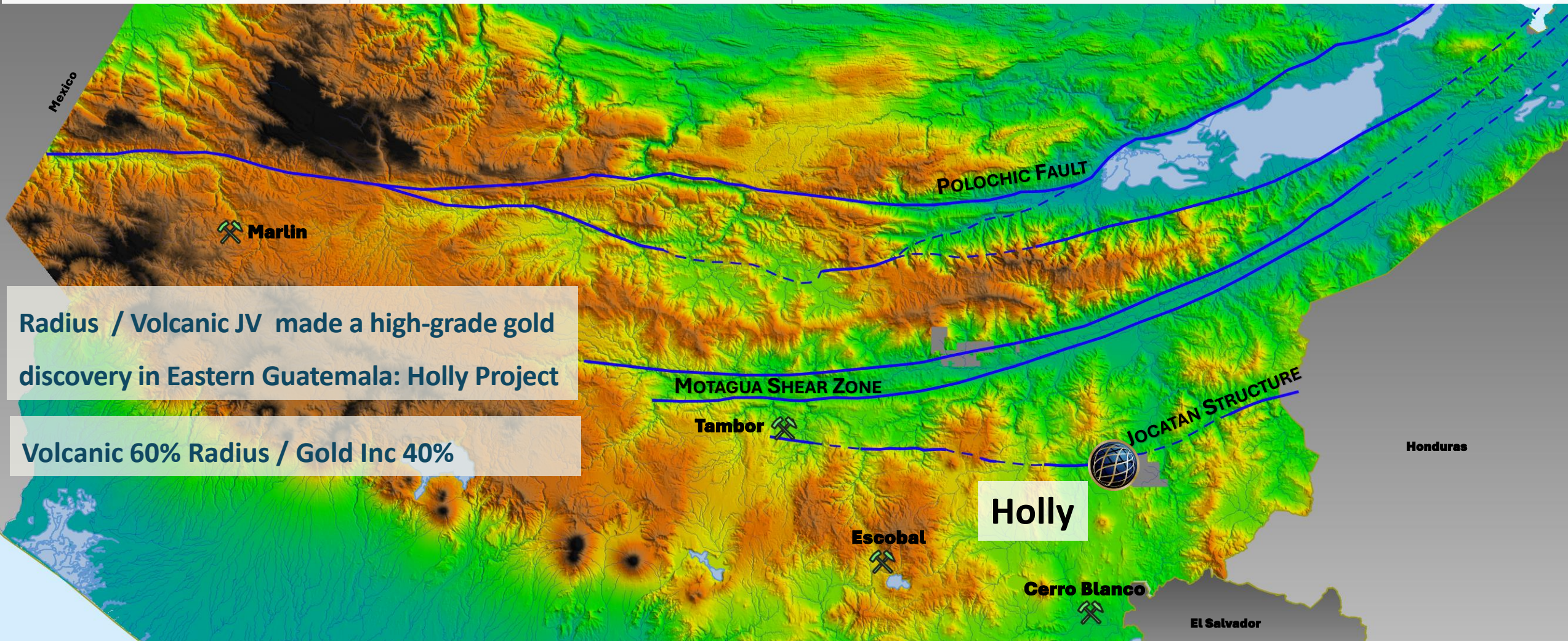
High Grade

Bonanza + 1oz Gold and +1kg Silver drill intercepts.



Regional Discoveries

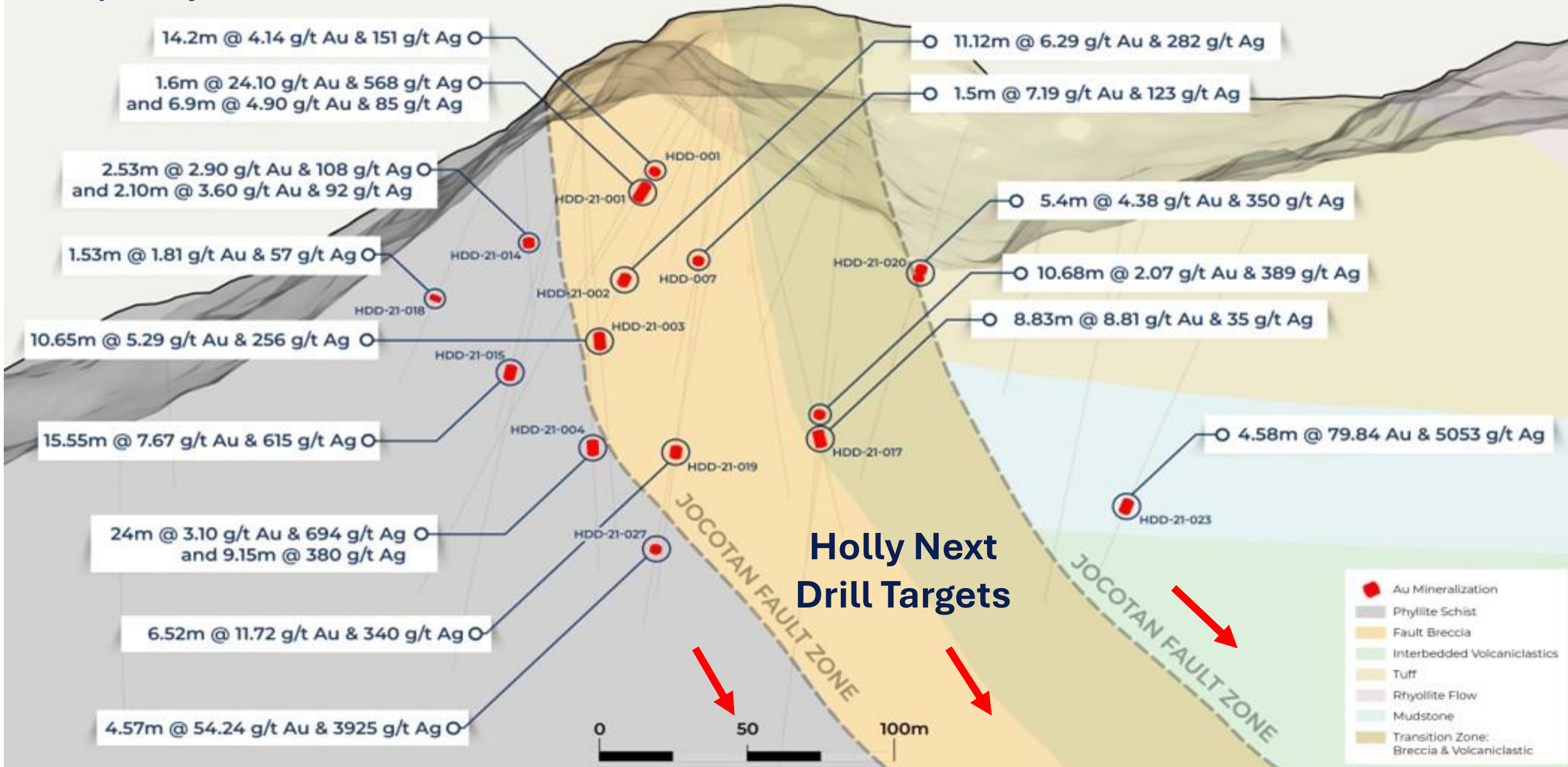
Marlin gold mine, Escobal silver mine & Cerro Blanco gold project.



Radius / Volcanic JV made a high-grade gold discovery in Eastern Guatemala: Holly Project

Volcanic 60% Radius / Gold Inc 40%

Holly Project – Long section: High grade gold resource open for expansion



Holly Project

La Peña Maiden
Inferred Mineral Resource
US\$1800/oz Au & US\$22/oz Ag



Category	Cut-off grade AuEq (g/t)*	Tonnes above cutoff (millions)	Gold (g/t)	Silver (g/t)	Gold (oz)	Silver (oz)	Gold Equivalent* (g/t)	Gold Equivalent* (oz)
Inferred	3.00	1.32	6.46	256	272,110	10,913,360	9.57	406,316

1. Mineral resources estimated using a 3.0 g/t gold equivalent cut-off grade and a top cap grade of 100 g/t gold and 2,000 g/t silver and presented on a 100%-basis.
2. Gold Equivalent Au(eq) values based on Au US\$1800 and Ag US\$22 using formula $(Au \text{ g/t} + (Ag \text{ g/t} \times 0.01222))$
3. Mineral resources which are not mineral reserves have not demonstrated economic viability. The estimate of mineral resources may be materially affected by environmental, permitting, legal, marketing, or other relevant issues. The mineral resources in this report were estimated using the Canadian Institute of Mining, Metallurgy and Petroleum standards on mineral resources and reserves, definitions, and guidelines prepared by the CIM standing committee on reserve definitions and adopted by the CIM council. Notwithstanding, to meet the requirement that the reported Mineral Resources show "reasonable prospects for eventual economic extraction".
4. The quantity and grade of reported inferred resources in this estimation are uncertain in nature and there has been insufficient exploration to define these inferred mineral resources as an indicated or measured mineral resource. It is uncertain if further exploration will result in upgrading them to an indicated or measured mineral resource category.
5. Contained metal and tonnes figures in totals may differ due to rounding.
6. An NI43-101 technical report for the Holly gold-silver project mineral resource estimate was filed on SEDAR+ at sedarplus.ca on July 20, 2022 by Volcanic Gold Mines Inc.

The mineral resource estimate is underpinned by data from 21 diamond drillholes totaling 3707 m of drilling. Drill spacing ranges between 20 and 100 m. All sample data was composited to a 2D dataset (linear grade and true thickness values) prior to analysis and estimation. The sample database and the topographic survey were reviewed and validated by Bruce Smith, Ludvig Monroy and Shawn Rastad prior to being supplied to John Arthur, an independent UK based resource consultant. Such review and validation help to support the reliability of the estimate. Geological domain modelling was completed by Bruce Smith and Dr John Arthur. Mineral resource domain modelling, grade interpolation, mineral resource classification and reporting of the mineral resource statement, was performed by Dr John Arthur. Dr Arthur, Mr. Smith, Mr. Monroy and Mr. Rastad are "qualified persons" within the meaning of National Instrument 43-101 Standards of Disclosure for Mineral Projects ("NI 43-101"). Block modelling was carried out using cell dimensions of 32 mE by 32 mN by 8 mRL and was coded to reflect the surface topography and mineralized zones. Density values were globally assigned into two zones, an upper zone between 50 m to 100 m from surface had an average density of 2.33 t/m³ and below this an average density of 2.52 t/m³ was applied. The mineral resource estimate has been classified based on data density, data quality, confidence in the geological interpretation and confidence in the robustness of the grade interpolation.

The effective date of the Mineral Resource Estimate is June 7, 2022 and an NI43-101 Technical Report on the Holly property is filed on the Company's website and SEDAR+ at sedarplus.ca with a reporting date of July 20, 2022.

RADIUS PROJECTS & REVALUATION TRIGGERS

100% RADIUS TIERRA ROJA



Peru – Copper Project

Potential for discovery of large surface oxide copper deposit

Work program:

- Drill ready once permit is received



EVALUATING NEW PROJECTS



Base & Precious Metals

Pipeline of new projects under evaluation

Expects to be able to deliver new projects in the coming months



AMALIA JV



Mexico – Gold & Silver

Resumption of exploration & resource definition drilling

Resource calculation



HOLLY JV



Guatemala – Gold

Mining permit granted for Holly project

Aura Minerals received construction license for Era Dorada Mine (January 7, 2026).

Re-activate Escobal mine
(Pan American Silver)



RADIUS GOLD INC

CORPORATE STRUCTURE

CASH HOLDINGS – \$1,330,000 *

*As of January 13, 2026

115.70M	6.52M	--	122.22M	Cdn \$0.14*	Cdn \$15.72M*	~11%*
ISSUED SHARES	OPTIONS	WARRANTS	FULLY DILUTED	TRADING PRICE	MARKET CAP	MANAGEMENT

MANAGEMENT & BOARD OF DIRECTORS



Simon Ridgway
Executive Chairman,
Director



Bruce Smith
Director, CEO,
President



Mario Szotlender
Director



William Katzin
Director



Alejandro Ly
Vice President of
Exploration



Javier Castaneda
Chief Geologist
Mexico



Areli Moya
Country & Legal
Representative



Felix Ceron
Project Geologist
Peru



RADIUS
GOLD INC.

Contact Info

Email: bsmith@goldgroup.com

Telephone: +1 (604) 801-5432

Mobile: +1 (642) 218-83763

Radiusgold.com