

RELENTLESS EXPLORATION - GREAT DISCOVERIES

Radius is at heart a gold & silver exploration company. However, we are opportunistic and are looking at other natural resource opportunities that present a favourable upside. The Company is well financed and management has a wealth of experience in all aspects of mineral exploration and development.

COMPANY ASSETS



AMALIA MEXICO

Resource Definition
Drilling in progress

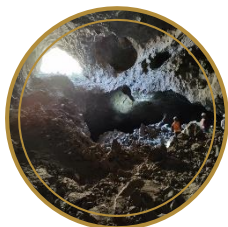
Fully funded by:



GUATEMALA

Inferred Resource
(406,316 oz AuEq)

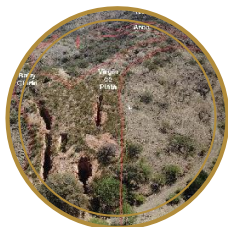
Fully funded by:



PLATA VERDE MEXICO

Drill Ready

Fully funded by



MARICELA MEXICO

Drilling in progress

100% Radius



OUR NEXT BIG DISCOVERY

Prolific Project Generators



Rackla Metals Inc

Non-Dilutive 19%

COMPANY STRUCTURE

July 21, 2022

Issued & Outstanding	87.24M
Warrants	0
Options	5.87 m
Fully Diluted	93.11M
Management	~ 15%
Cash & Equities	\$3.66M

TEAM

Experience is Everything

Simon Ridgway - Chairman

- 35+ years resource industry experience
- Mining, finance and exploration
- Founder of Fortuna Silver, Volcanic Gold Mines GoldenHawk, Northland Resources

Bruce Smith - CEO President

- Geologist & Engineer with 28 years global operational experience Discoveries in Guinea, Guatemala, Nicaragua
- Led discovery of 200 Moz Chinchillas deposit, Argentina

Javier Castaneda - Chief Geo

- Geologist 40+ years exploration and mining for precious and base metals
- Senior positions with Grupo Mexico, Fresnillo, Tormex, Noranda, Hemlo, Francisco Gold

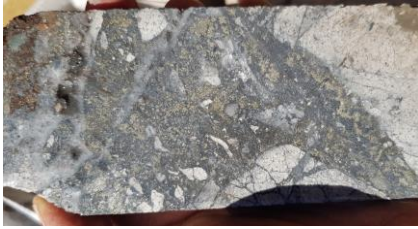
Bradford Cooke - Director

- 40+ years building mining & exploration companies Geologist and founder of Endeavour Silver, Aztec, Canarc

High grade drill results - New discoveries

San Pedro - Amalia

44m @ 12.39 g/t Au, 309 g/t Ag



Holly - Guatemala

15m @ 7.67 g/t Au, 615 g/t Ag



California - Amalia

27m @ 2.59 g/t Au, 353 g/t Ag



2022 & Beyond

GUATEMALA JV

- 31 Holes / +5000m completed
- Inferred Resource on La Pena structure 406,316 oz AuEq
- Multiple exploration projects
- Fully funded by JV partner

AMALIA JV

- Drilling now El Cuervo target
- 67 Holes / 23,058m completed
- 3 main gold-silver structural zones
- Resource definition drilling
- Fully funded by JV partner

PLATA VERDE

- Fully funded by JV Partner, Fresnillo Plc
- Fully permitted and drill ready

MARICELA

- Open pit gold silver stockwork target
- Permitting & drilling 2022

NEW DISCOVERIES

- Constantly advancing new exploration projects



PARTNERS



Cautionary Notes and Disclaimers

Certain statements contained in this presentation constitute forward-looking statements within the meaning of Canadian securities legislation. All statements included herein, other than statements of historical fact, are forward-looking statements which may include, without limitation, statements about the Company's plans for its investments and properties; the Company's business strategy, plans and outlook; the merit of the Company's investments and properties; timelines; the future financial performance of the Company; expenditures; approvals and other matters. Often, but not always, these forward looking statements can be identified by the use of words such as "estimate", "estimates", "estimated", "potential", "open", "future", "assumed", "projected", "used", "detailed", "has been", "gain", "upgraded", "offset", "limited", "contained", "reflecting", "containing", "remaining", "to be", "periodically", or statements that events, "could" or "should" occur or be achieved and similar expressions, including negative variations.

Forward-looking statements involve known and unknown risks, uncertainties and other factors which may cause the actual results, performance or achievements of the Company to be materially different from any results, performance or achievements expressed or implied by forward-looking statements. Such uncertainties and factors include, among others, changes in general economic conditions and financial markets; the Company or any joint venture partner not having the financial ability to meet its exploration and development goals; risks associated with the results of exploration and development activities, estimation of mineral resources and the geology, grade and continuity of mineral deposits; unanticipated costs and expenses; and such other risks detailed from time to time in the Company's quarterly and annual filings with securities regulators and available under the Company's profile on SEDAR at www.sedar.com. Although the Company has attempted to identify important factors that could cause actual actions, events or results to differ materially from those described in forward-looking statements, there may be other factors that cause actions, events or results to differ from those anticipated, estimated or intended.

Forward-looking statements contained herein are based on the assumptions, beliefs, expectations and opinions of management, including but not limited to expectations that the Company's activities will be in accordance with its public statements and stated goals; that all required approvals will be obtained; that there will be no material adverse change affecting the Company, its investments or properties; and such other assumptions as set out herein. Forward-looking statements are made as of the date hereof and the Company disclaims any obligation to update any forward-looking statements, whether as a result of new information, future events or results or otherwise, except as required by law. There can be no assurance that forward-looking statements will prove to be accurate, as actual results and future events could differ materially from those anticipated in such statements. Accordingly, investors should not place undue reliance on forward-looking statements.

Under the terms of NI43-101, Bruce Smith, M.Sc., MAIG, is Radius' Qualified Person.

Mr. Smith holds B.Sc., M.Sc., is a member of the Australian Institute of Geoscientists (No6848) and a "Qualified Person" in accordance with National Instrument 43-101 and has reviewed and takes responsibility for the technical information contained in this presentation.

TSX.V-RDU | RADIUSGOLD.com

Focused on Silver & Gold in Mexico & Guatemala



650 - 200 Burrard Street
Vancouver, BC V6C 3L6

Tel: +64 221883763
bsmith@goldgroup.com

Bruce Smith
Pre & CEO